



# SOUTHERN WIDE

## BUILDING



Southern *design*

Volume 5



# WELCOME...

## ...TO OUR SOUTHERN DESIGN BROCHURE

Our mission is to provide good quality affordable homes for clients in the lower South Island.

Southernwide Building has been operating under the directorship of John Taylor since 2008. We are locally owned and operated and are passionate about the Southern Region and providing excellent service.

We have a fantastic team who will manage your building process from concept to completion.

Southernwide Building can tailor any plan to suit your needs and lifestyle. Be it a new home design and build, a renovation or a shed you will receive the same quality service throughout.

Following is a sample range of plans that we can offer from residential builds, small farm worker's accommodation or holiday homes to larger lifestyle builds.

Our in-house design team can assist with any variations to these plans or send us the details of your property and we can send you back a selection of designs that will suit, check out our website for more plans and inspiration [www.southernwidebuilding.co.nz](http://www.southernwidebuilding.co.nz)

Call us today or visit our friendly team to start making your dreams become reality.



13 Main Street, PO Box 234 Gore 9710,  
New Zealand  
03 203 9098 / 0800 0800 67

[www.southernwidebuilding.co.nz](http://www.southernwidebuilding.co.nz)

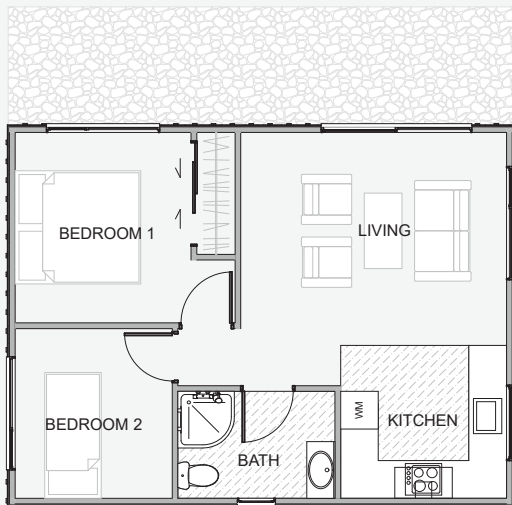
Photo credit Still Vision Photography

## Contents

|                     |                   |                                |    |
|---------------------|-------------------|--------------------------------|----|
| <b>Bluff</b>        | 48m <sup>2</sup>  | 2 Bed, 1 Bath, 1 Living        | 4  |
| <b>Naseby</b>       | 61m <sup>2</sup>  | 2 Bed, 1 Bath, 1 Living        | 4  |
| <b>Maitland</b>     | 99m <sup>2</sup>  | 3 Bed, 2 Bath, 1 Living, 1 Car | 5  |
| <b>Dacre</b>        | 118m <sup>2</sup> | 3 Bed, 1 Bath, 1 Living        | 7  |
| <b>Clyde</b>        | 125m <sup>2</sup> | 3 Bed, 1 Bath, 1 Living        | 8  |
| <b>McNab</b>        | 133m <sup>2</sup> | 3 Bed, 2 Bath, 1 Living, 1 Car | 9  |
| <b>Oyster Bay</b>   | 154m <sup>2</sup> | 3 Bed, 2 Bath, 1 Living        | 10 |
| <b>Dolamore</b>     | 164m <sup>2</sup> | 3 Bed, 2 Bath, 1 Living, 1 Car | 11 |
| <b>Frankton</b>     | 165m <sup>2</sup> | 3 Bed, 2 Bath, 1 Living, 2 Car | 13 |
| <b>Arrowtown</b>    | 172m <sup>2</sup> | 3 Bed, 2 Bath, 1 Living, 2 Car | 14 |
| <b>Wakatipu</b>     | 184m <sup>2</sup> | 3 Bed, 2 Bath, 1 Living, 2 Car | 15 |
| <b>Dunstan</b>      | 184m <sup>2</sup> | 3 Bed, 2 Bath, 1 Living, 2 Car | 16 |
| <b>Manapouri</b>    | 190m <sup>2</sup> | 3 Bed, 2 Bath, 1 Living, 2 Car | 18 |
| <b>Hawea</b>        | 204m <sup>2</sup> | 4 Bed, 2 Bath, 1 Living, 2 Car | 19 |
| <b>Gibbston</b>     | 206m <sup>2</sup> | 5 Bed, 2 Bath, 1 Living, 2 Car | 20 |
| <b>Kingston</b>     | 215m <sup>2</sup> | 4 Bed, 2 Bath, 2 Living, 2 Car | 22 |
| <b>Waimea</b>       | 221m <sup>2</sup> | 3 Bed, 2 Bath, 2 Living, 2 Car | 23 |
| <b>Clifden</b>      | 233m <sup>2</sup> | 4 Bed, 2 Bath, 2 Living, 2 Car | 24 |
| <b>Fortrose</b>     | 247m <sup>2</sup> | 4 Bed, 2 Bath, 2 Living, 2 Car | 26 |
| <b>Clydevale</b>    | 252m <sup>2</sup> | 4 Bed, 2 Bath, 2 Living, 2 Car | 27 |
| <b>Bannockburn</b>  | 262m <sup>2</sup> | 4 Bed, 2 Bath, 2 Living, 2 Car | 29 |
| <b>Tarras</b>       | 273m <sup>2</sup> | 4 Bed, 2 Bath, 2 Living, 2 Car | 30 |
| <b>Chatto Creek</b> | 281m <sup>2</sup> | 4 Bed, 3 Bath, 3 Living, 2 Car | 31 |
| <b>Pisa</b>         | 305m <sup>2</sup> | 4 Bed, 2 Bath, 2 Living, 3 Car | 33 |
| <b>Lowburn</b>      | 347m <sup>2</sup> | 5 Bed, 3 Bath, 3 Living, 2 Car | 34 |
| <b>Redcliff</b>     | 357m <sup>2</sup> | 4 Bed, 3 Bath, 3 Living, 3 Car | 36 |
| <b>Dublin Bay</b>   | 431m <sup>2</sup> | 5 Bed, 3 Bath, 2 Living, 2 Car | 37 |



# Bluff



Width.....6m  
Length.....8m  
Floor area .....48m<sup>2</sup>



2

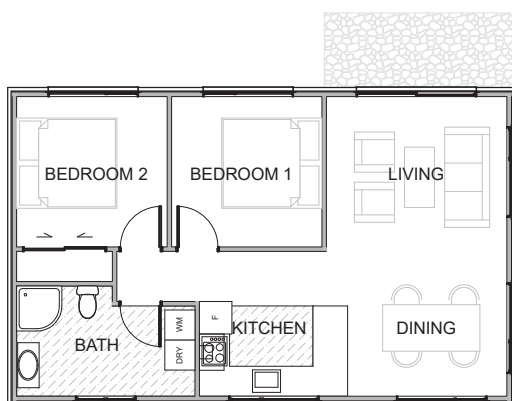


1



1

# Naesby



Width.....6.16m  
Length.....9.96m  
Floor area .....61m<sup>2</sup>



2



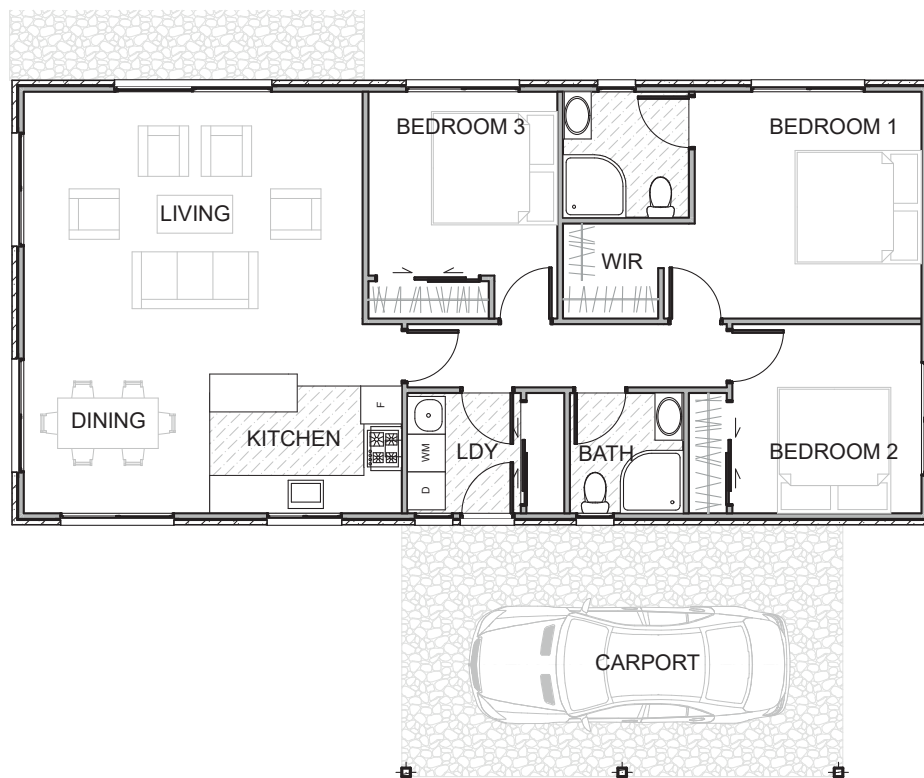
1



1



# Maitland



Width.....6.87m  
 Length .....14.43m  
 Floor area .....99m<sup>2</sup>





## The Proven, H1-Compliant Concrete Foundation

When it comes to H1 requirements, Allied Concrete has been leading the way since the changes came into effect. We understand the challenges, expectations, and performance standards that come with H1 compliance and we've been delivering reliable solutions ever since.

Allied Concrete's SuperSlab+ is a game-changing solution that delivers edge-insulated concrete foundations designed to make new homes and buildings warmer, drier, and healthier.

### Why Choose SuperSlab+?

#### H1 Compliant

SuperSlab+ surpasses the latest R-value requirements of the H1 building code, offering unmatched thermal performance and reduced energy consumption.

#### Certified Solution

SuperSlab+ is a CodeMark certified and BRANZ appraised solution. With these certifications, you can be confident in the quality and compliance of your project.

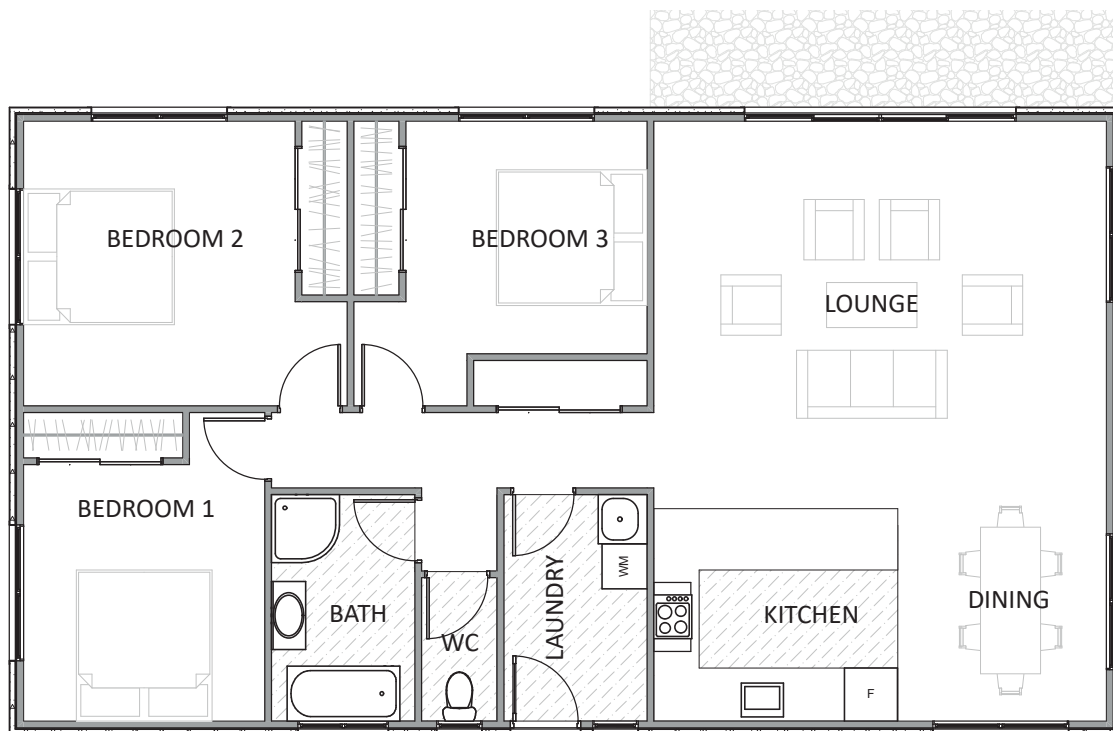
#### Sustainable & Low Carbon

SuperSlab+ takes its environmental commitment to the next level when combined with our eco-conscious technologies like Ecrete™ and QPOD.





# Dacre



Width.....8.15m

Length.....14.54m

Floor area .....118m<sup>2</sup>



3



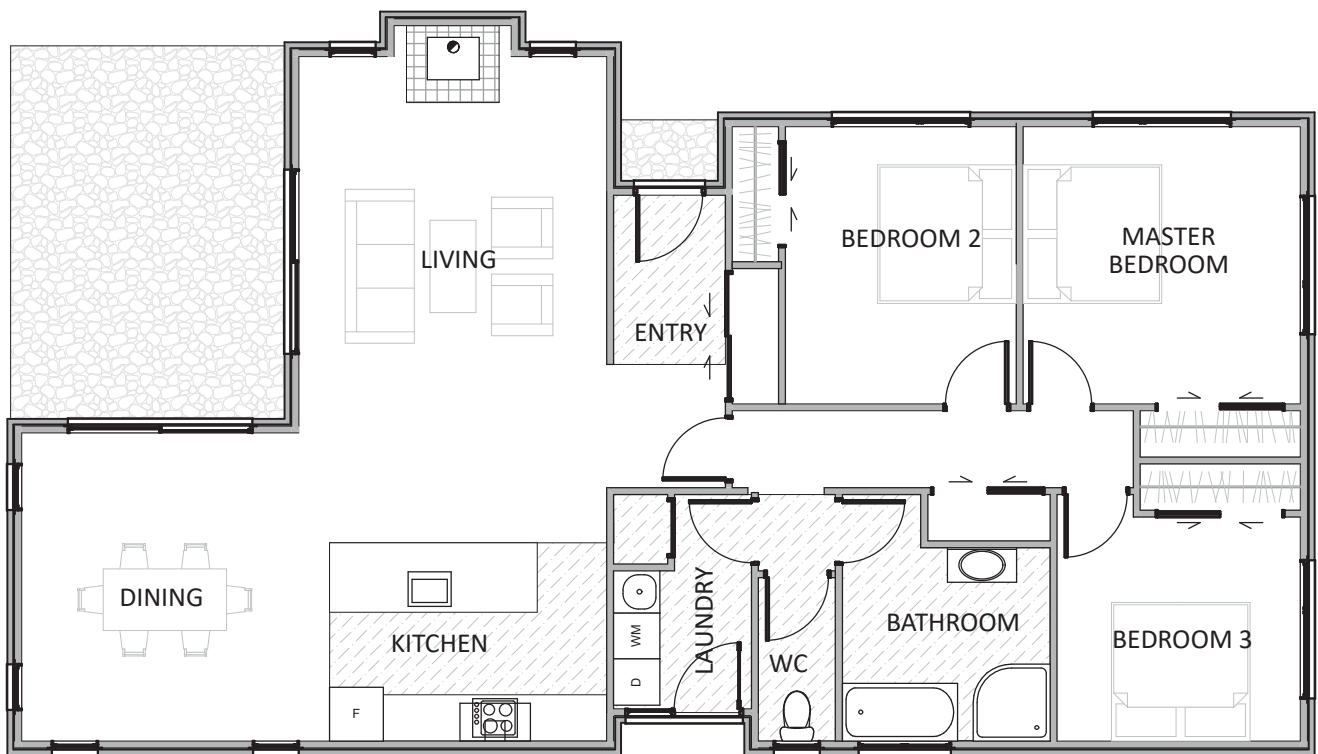
1



1



# Clyde



Width.....9.47m  
 Length.....16.79m  
 Floor area .....125m<sup>2</sup>



3



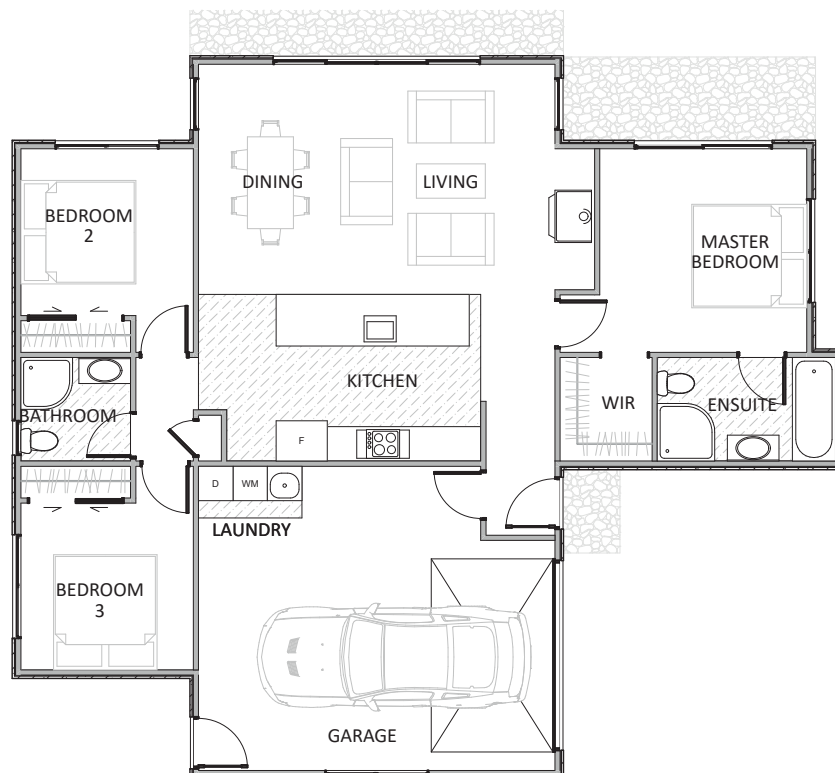
1



1



# McNab



Width.....12.48m

Length.....14.35m

Floor area .....133m<sup>2</sup>



3



2



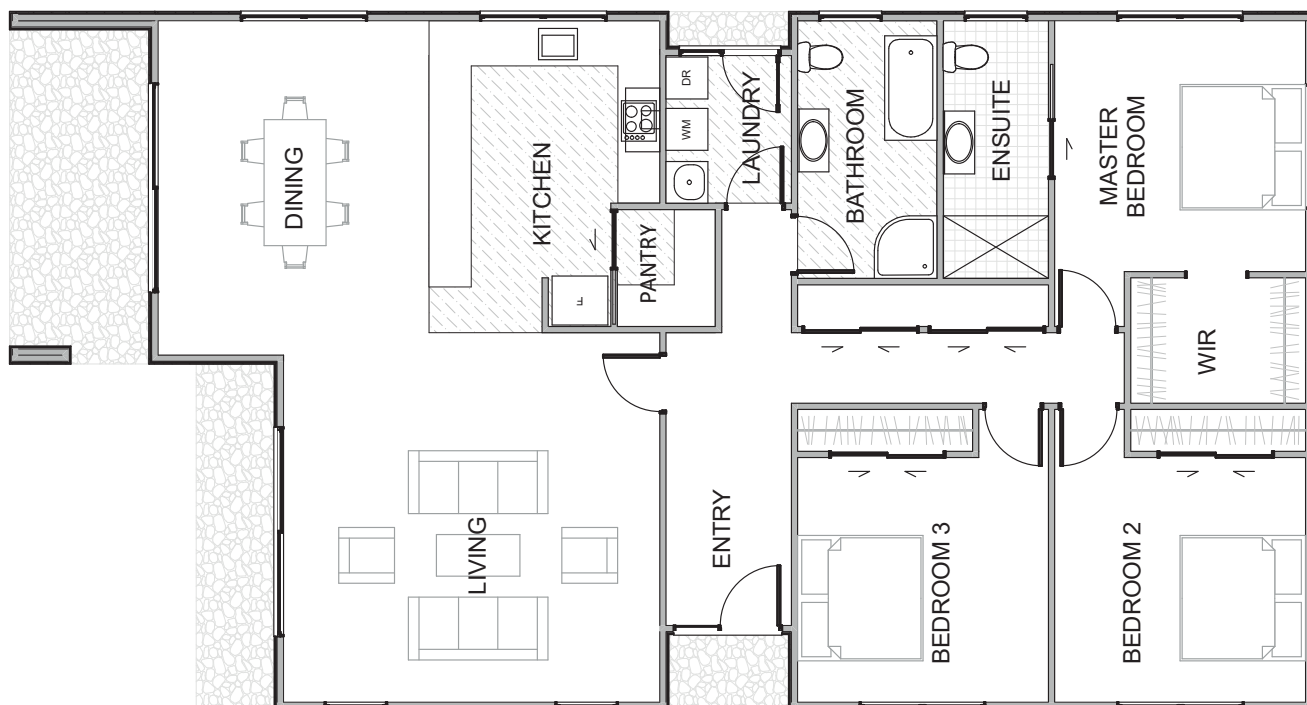
1



1



# Oyster Bay



Width.....9.96m

Length.....18.5m

Floor area .....154m<sup>2</sup>



3



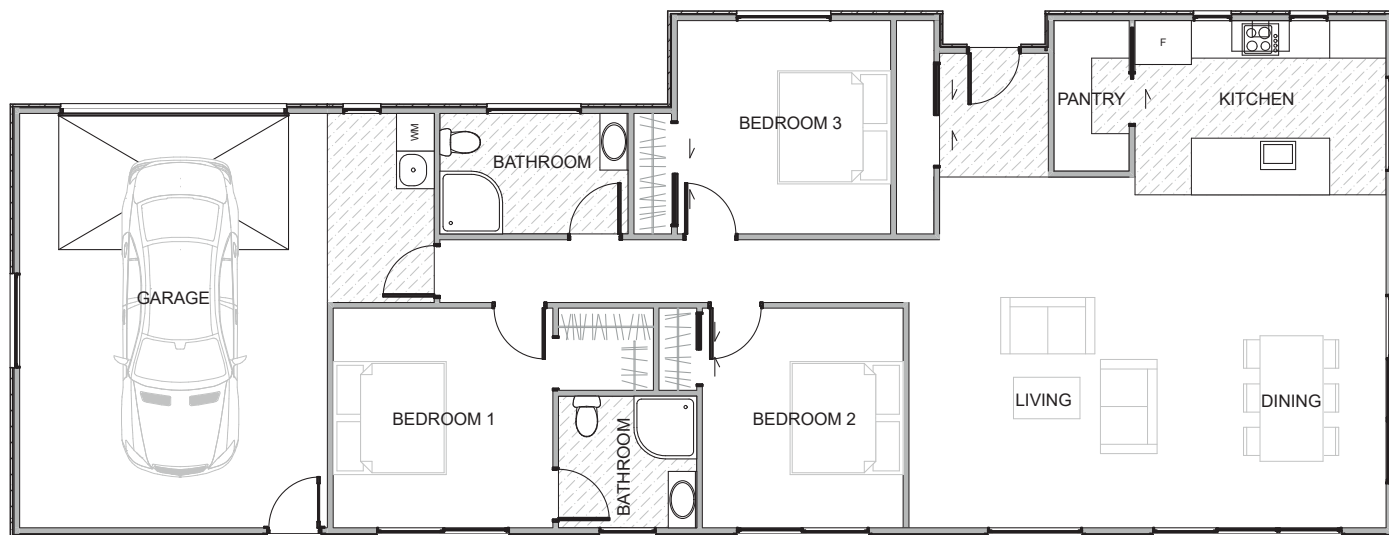
2



1



# Dolamore



Width..... 8.26m

Length..... 21.9m

Floor area ..... 164m<sup>2</sup>



3



2



1



1





## Building towards a sustainable future

As we move towards a brighter and more sustainable Aotearoa New Zealand, it's important that we consider all aspects of our building practices. Every day, Allied Concrete is taking steps to reduce our carbon footprint and create a better future for generations to come. That's why we're proud to introduce Ecrete™ - an innovative concrete mix designed to reduce carbon impact without compromising on strength and durability. With its cutting-edge formula and environmentally friendly properties, Ecrete™ is paving the way for sustainable building practices in New Zealand.

When you choose Allied Concrete, you're already taking a step towards sustainable building practices by reducing

embodied carbon by up to 20%\* compared to the 2020 ISC baseline. But with our revolutionary Ecrete™ range, we're able to take it even further - reducing CO<sub>2</sub> emissions by 20-75%. This innovative solution is designed to not only meet your project's needs but also make a positive impact on the environment. With Ecrete™, you can feel good about the concrete you use, knowing that you're making a difference in building a more sustainable future.

Ecrete™ reduces CO<sub>2</sub> by 10-50%\*. Ecrete™ Plus is a bespoke carbon-reduced mix that our technical team can develop based on our client's specific requirements. Ecrete™ Plus can reduce CO<sub>2</sub> beyond 50% and is designed to balance our client's strength, flowability and finishing requirements.

## Low Carbon Concrete

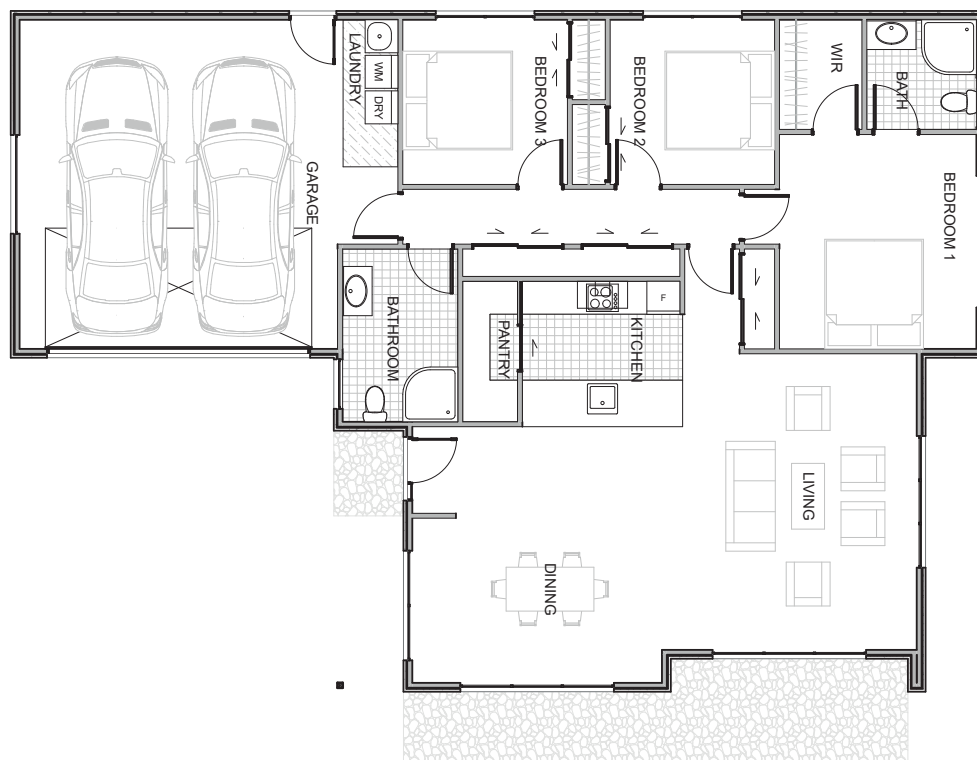
Ecrete™ is our innovative concrete mix, engineered to reduce carbon impact without compromising on strength and durability. Every project specifying Ecrete™ now benefits from a third-party verified Environmental Product Declaration (EPD), ensuring accurate CO<sub>2</sub> reduction numbers tailored to your project's specific needs. This marks a significant step forward in our commitment to transparency and environmental responsibility.



Reduction in Embodied Carbon compared to 2020 Infrastructure Sustainability Council (ISC) 2020 baseline for ready mixed concrete.  
\*CO<sub>2</sub> reduction for Allied mixes will alter dependent on branch location



# Frankton



Width.....12.28m

Length.....17.63m

Floor area .....165m<sup>2</sup>



3



2



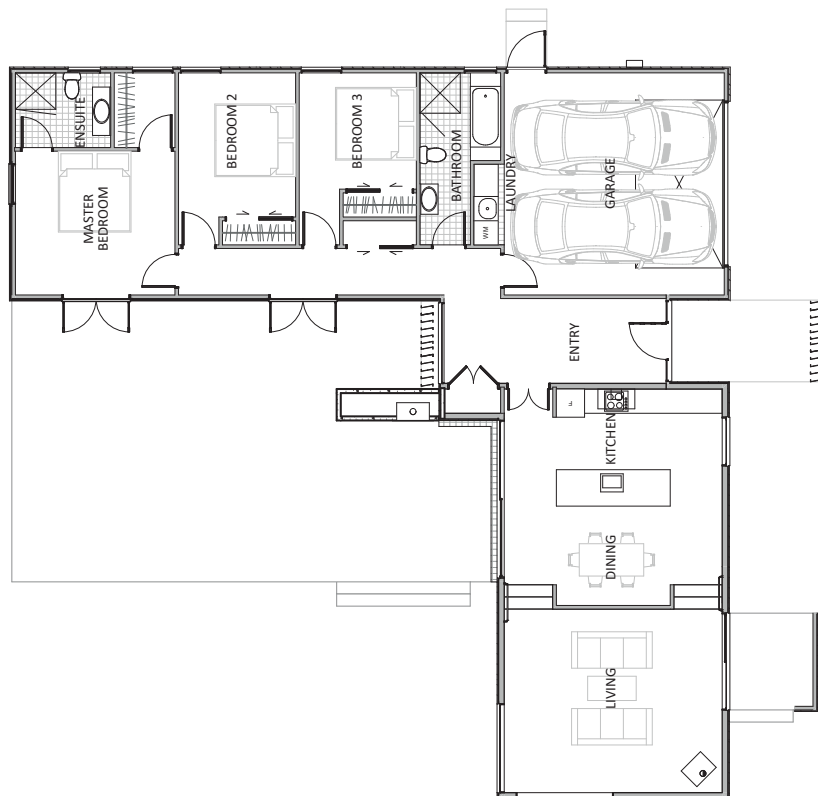
1



2



# Arrowtown



Width.....17.74m

Length.....18m

Floor area .....172m<sup>2</sup>



3



2



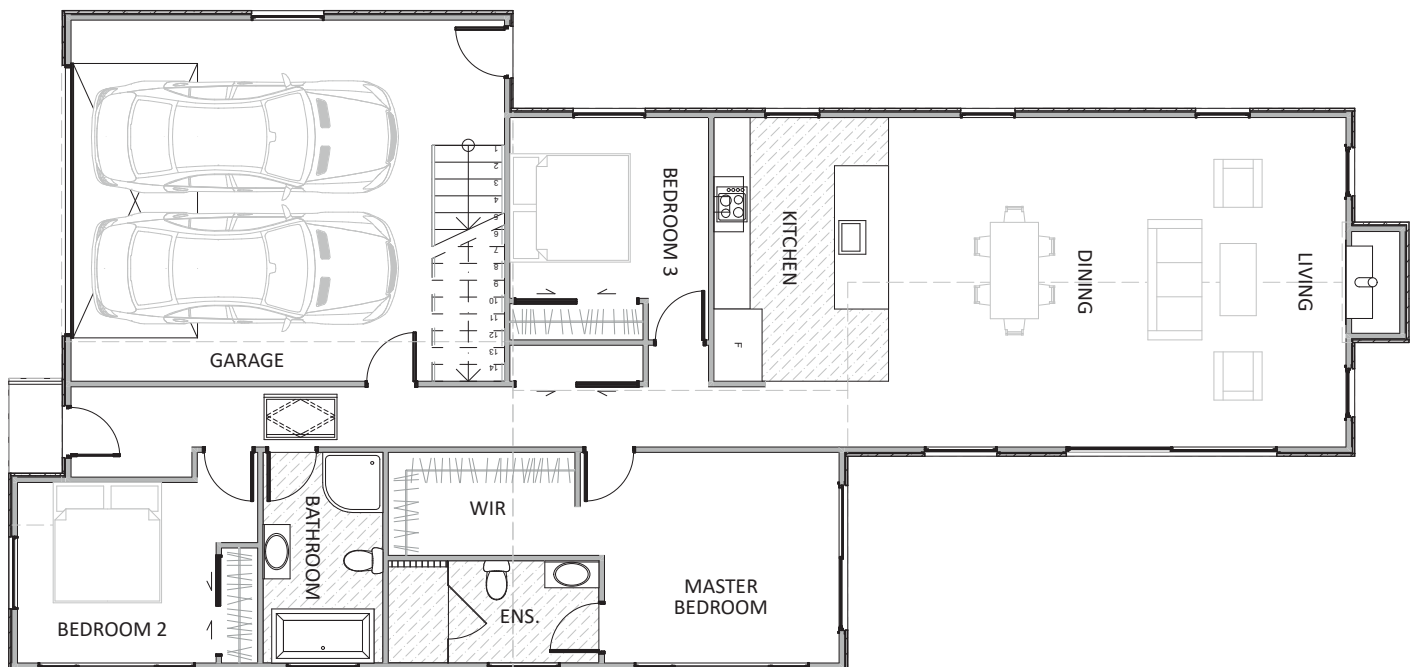
1



2



# Wakatipu



Width.....10.8m

Length.....23.1m

Floor area .....184m<sup>2</sup>



3



2



1



2



# Dunstan



Width.....15.1m

Length.....19.6m

Floor area .....184m<sup>2</sup>



3



2



1



2



# ROOFING WITH STYLE



ROOFING | CLADDING | RAINWATER SYSTEMS



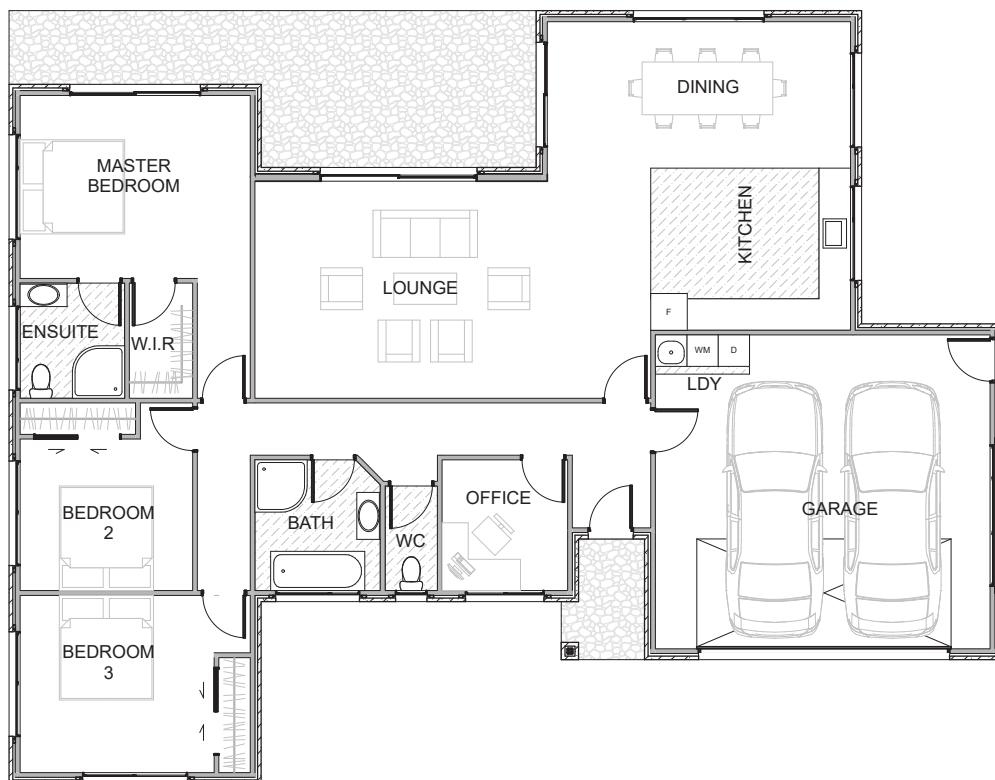
**Roofing Industries Southland**  
**Proudly Supplying SOUTHERNWIDE BUILDING**



133 Bill Richardson Drive, Avenal, Invercargill Ph: (03) 218 7663 E: [invercargill@roof.co.nz](mailto:invercargill@roof.co.nz)



# Manapouri



Width.....14.5m

Length.....18.7m

Floor area .....190m<sup>2</sup>



3



2



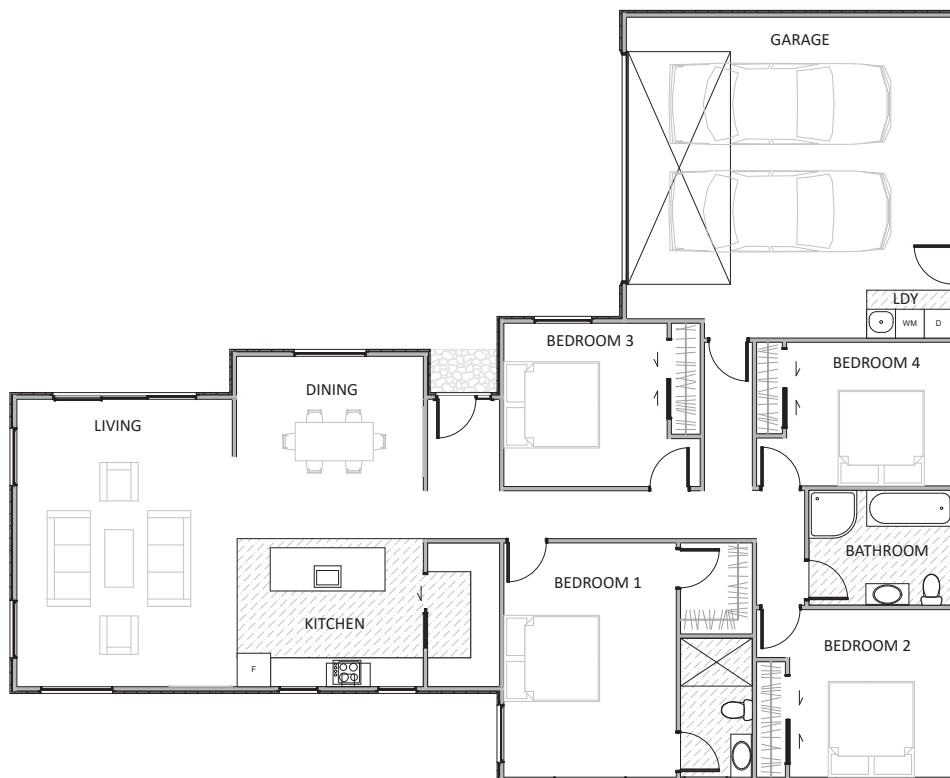
1



2



# Hawea



Width.....19.7m

Length.....16.5m

Floor area .....204m<sup>2</sup>



4



2



1



2



# Gibbston



Width.....11.45m

Length.....22.8m

Floor area .....206m<sup>2</sup>



5



2



1



2



# Beautiful, lightweight, highly durable exterior cladding



## EzPanel

### Lightweight Concrete Cladding

The EzPanel system is a cavity-based autoclaved aerated concrete (AAC) panel system which when finished with a layer of fibreglass reinforced polymer modified plaster creates a lightweight, highly durable exterior cladding.

#### Features

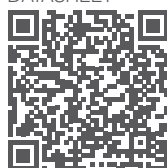
- EZpanel (AAC) are reinforced with a high strength wire mesh.
- Exterior insulation where temperature fluctuates the most.
- Very good resistance to the transmission of airborne sound.
- State of the art penetration flashing system.
- Fire tested.
- Large range of texture finishes and any colour you desire.
- Branz tested & appraised.
- Installed by LBP Qualified and Certified Exterior Plasterers.

**Specialized**  
CONSTRUCTION PRODUCTS



**BRANZ Appraised**  
Appraisal No: 649

PRODUCT  
SPECIFICATION  
DATASHEET



**New Zealand's Specialists in  
Exterior Plaster Systems & Materials**

**[www.specialized.co.nz](http://www.specialized.co.nz)**

**Ph: 0800 0800 79**





# Kingston



Width.....13.2m

Length.....21.5m

Floor area .....215m<sup>2</sup>



4



2



2



2



# Waimea



Width.....16m  
 Length.....20.5m  
 Floor area .....221m<sup>2</sup>



3



2



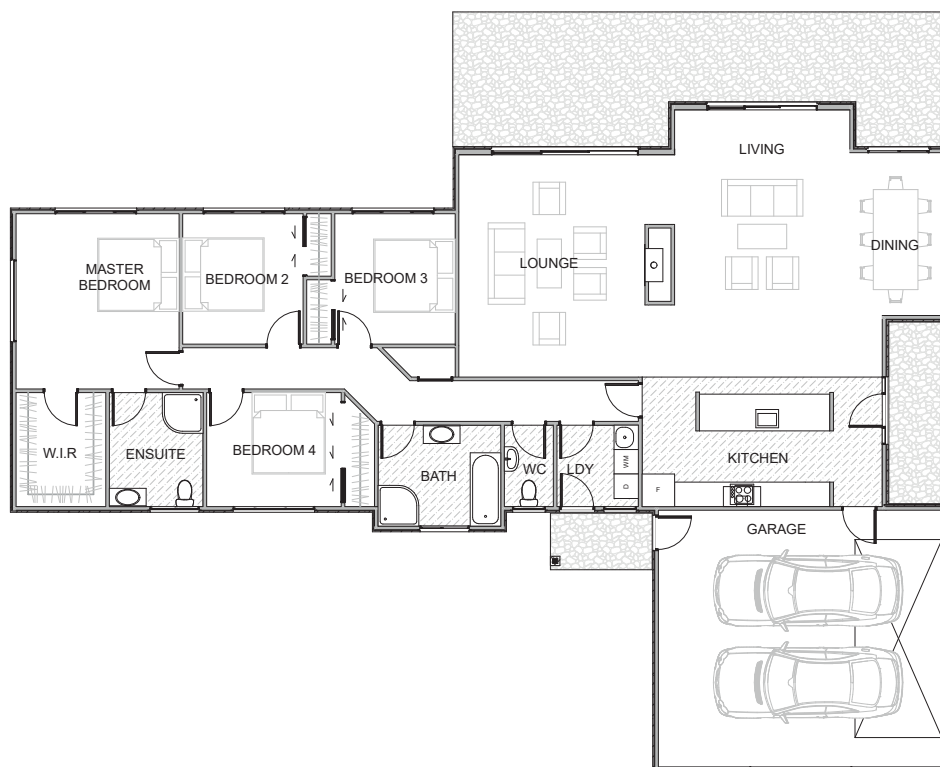
2



2



# Clifden



Width.....16.2m  
 Length.....22.9m  
 Floor area .....233m<sup>2</sup>







AITKEN JOINERY

**SUPPLIERS OF VANTAGE  
ALUMINIUM WINDOWS  
AND DOORS**

**Gore Office**

18 Gorton Street, Gore  
Ph (03) 208 6750  
[southland@aitkenjoinery.co.nz](mailto:southland@aitkenjoinery.co.nz)

**Wanaka Office**

21 Reece Crescent, Wanaka  
Ph (03) 443 4374  
[wanaka@aitkenjoinery.co.nz](mailto:wanaka@aitkenjoinery.co.nz)

**Cromwell Office**

54 McNulty Road, Cromwell  
Ph (03) 445 4000  
[centralotago@aitkenjoinery.co.nz](mailto:centralotago@aitkenjoinery.co.nz)

**Dunedin Office**

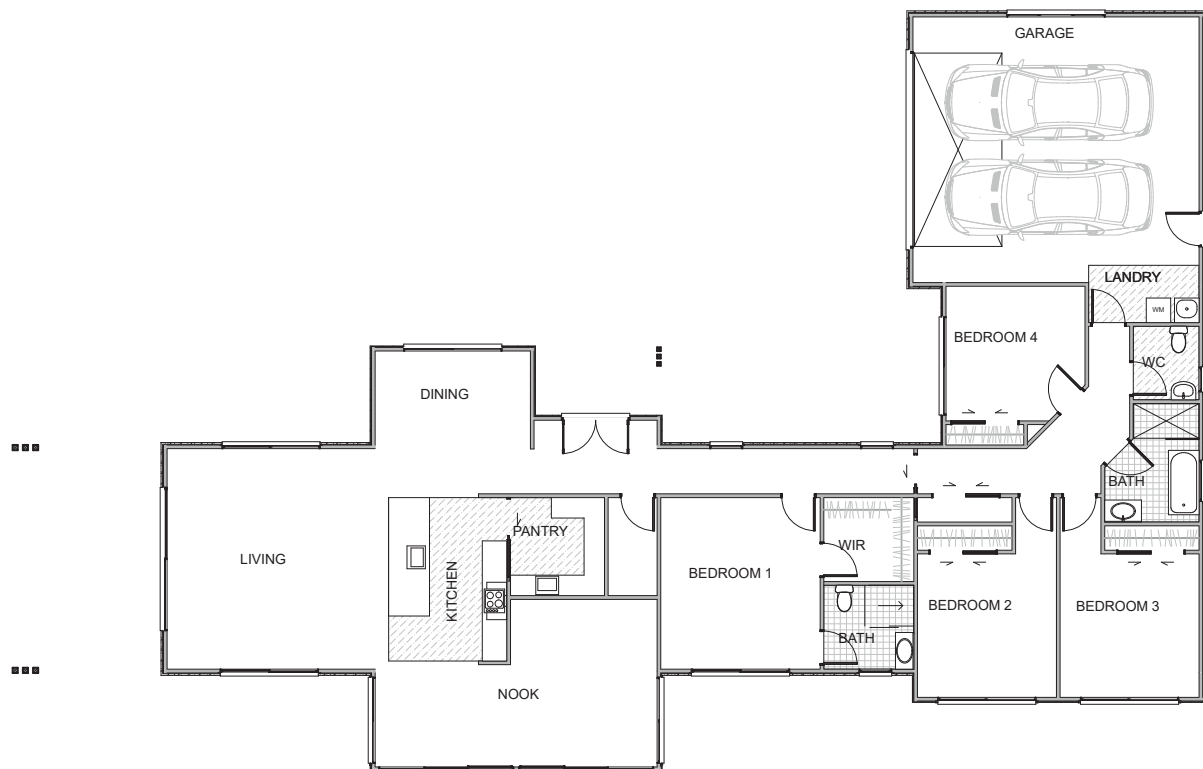
19 Portsmouth Drive, Dunedin  
Ph (03) 244 8271  
[otago@aitkenjoinery.co.nz](mailto:otago@aitkenjoinery.co.nz)

[WWW.AITKENJOINERY.CO.NZ](http://WWW.AITKENJOINERY.CO.NZ)





# Fortrose



Width.....18.53m

Length.....25.43m

Floor area .....247m<sup>2</sup>



4



2



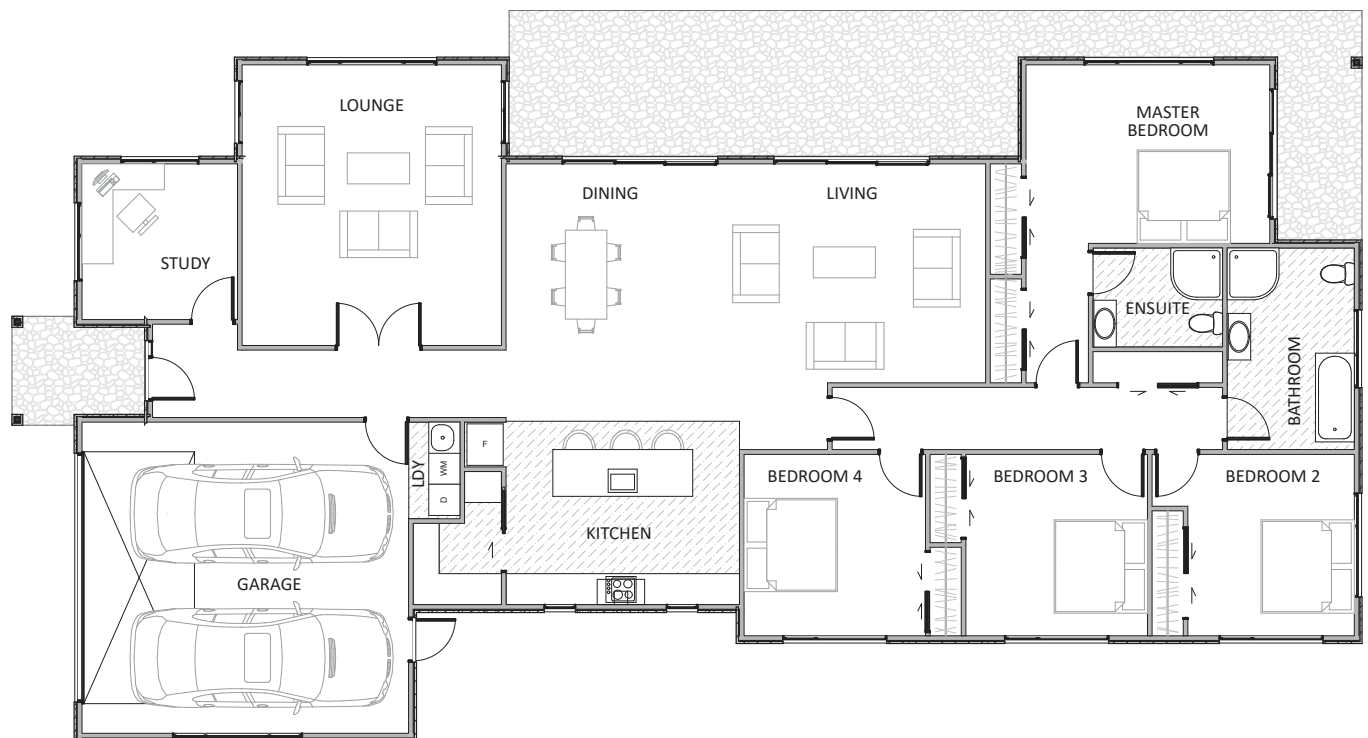
2



2



# Clydevale



Width.....13m  
 Length.....24.7m  
 Floor area .....252m<sup>2</sup>



4



2



2



2





Dulux Ceiling White +PLUS  
Kitchen&Bathroom



Dulux Wash&Wear +PLUS  
Kitchen&Bathroom

## THE PERFECT PAIR TO PROTECT YOUR KITCHEN AND BATHROOM

Protect your walls in damp and humid areas with exceptional washability and long lasting finish. Made with Barrier Technology® and fortified with mould inhibitor, **Dulux Wash&Wear +PLUS Kitchen&Bathroom** will keep your walls looking freshly painted for years.

For a bright white ceiling in damp areas such as kitchens and bathrooms, **Dulux Ceiling White +PLUS Kitchen&Bathroom** provides superior hiding power and only one coat over light colours to easily achieve a look that will last.

The best part?  
They're both specially formulated to provide protection for damp and humid areas like the kitchen and bathroom, and guaranteed against mould growth for 10 years\*.

LEARN MORE AT  
[dulux.co.nz](http://dulux.co.nz)



**Dulux®**  
Worth doing, worth Dulux.

Dulux, Worth Doing Worth Dulux, Wash & Wear and the Sheepdog device are registered trade marks of DuluxGroup (Australia) Pty Ltd.

\*Refer to product label for full conditions. This guarantee does not limit and may not necessarily exceed your rights under the Consumer Guarantees Act 1993.



# Bannockburn



Width.....23.8m

Length.....16.6m

Floor area .....262m<sup>2</sup>



4



2



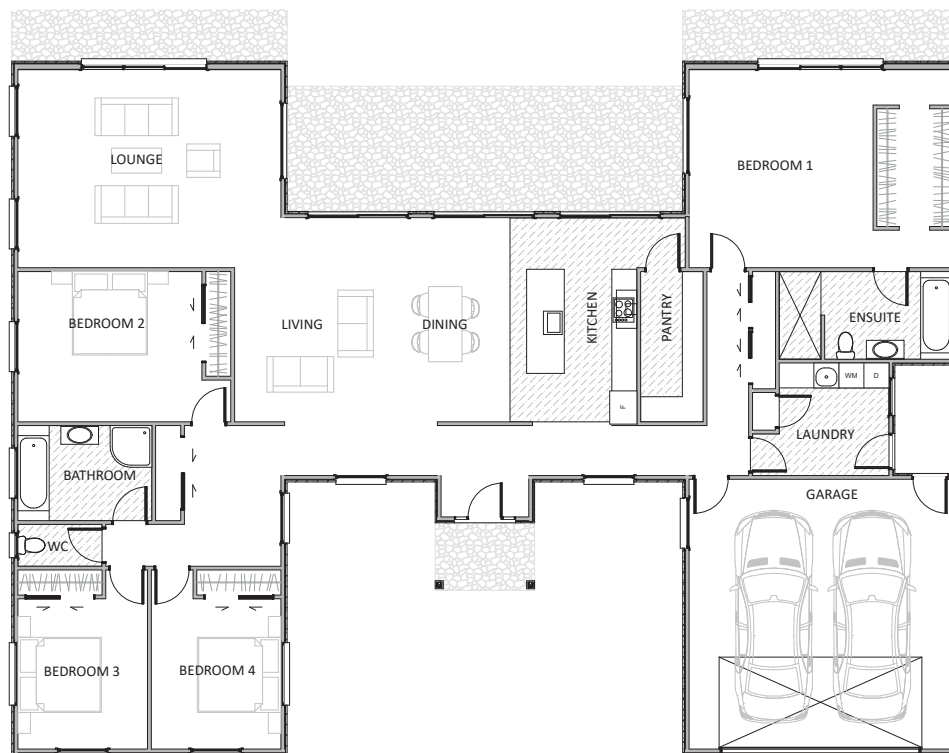
2



2



# Tarras



Width.....16.5m

Length.....22.6m

Floor area .....273m<sup>2</sup>



4



2



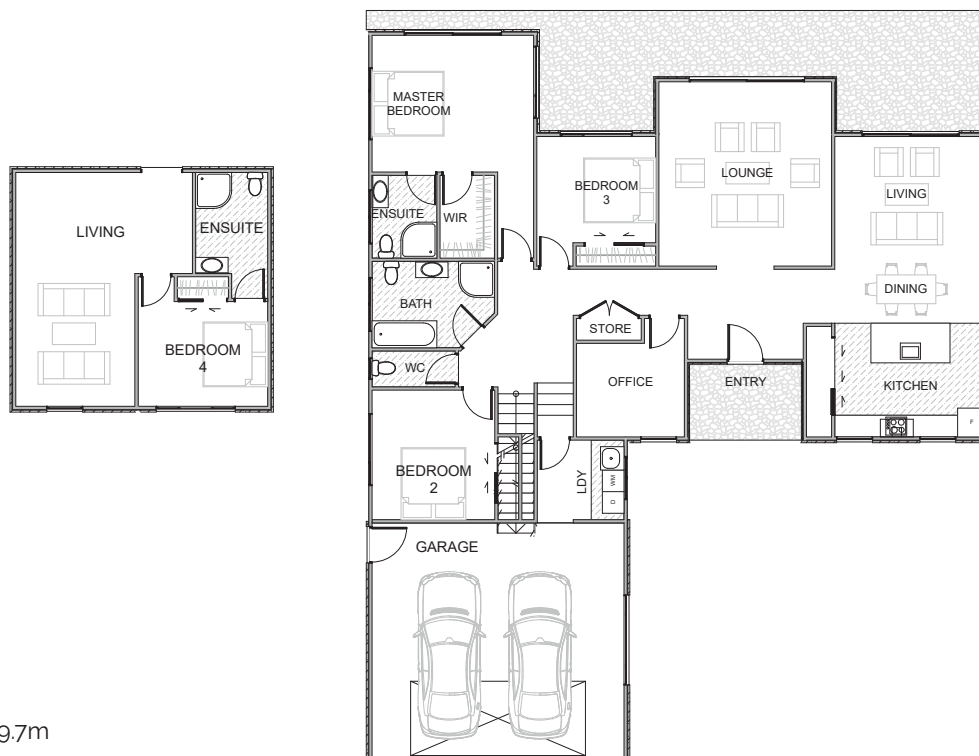
2



2



# Chatto Creek



Width.....19.7m

Length.....16.5m

Ground floor area ..233m<sup>2</sup>

First floor area.....48m<sup>2</sup>

Floor area.....281m<sup>2</sup>



4



3



3



2



# We make dream kitchens come true

## Maybe it's time to create your ultimate kitchen...

EZY Kitchens brings that dream to life with a kitchen designed, crafted, and made just for you. Maybe yours is a kitchen, where quality matters and budgets count... That's where EZY Express helps—practical, stylish, and budget-friendly solutions that make life EZY and affordable.

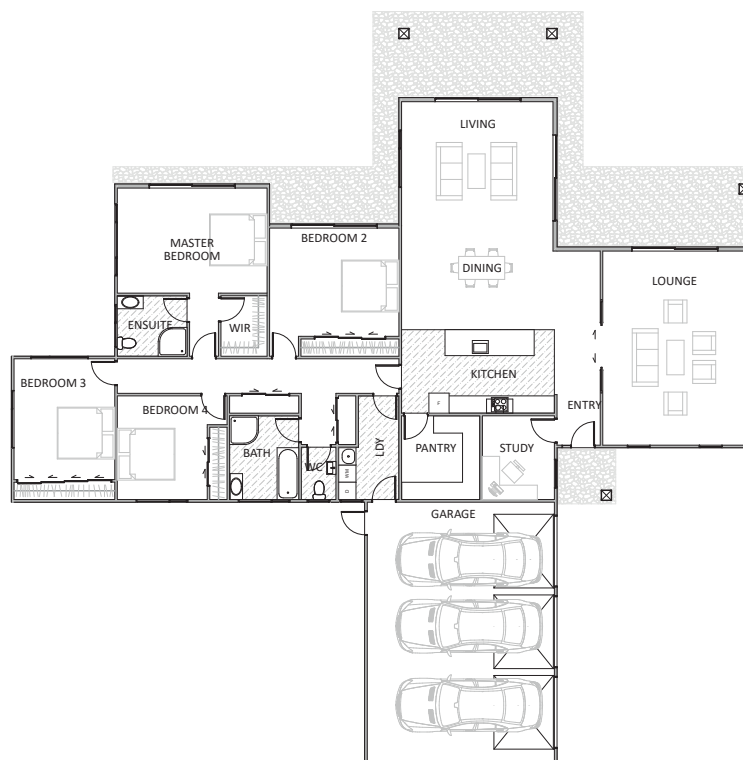


**ezy kitchens**  
and appliances

**MADE HERE. BY US. FOR YOU.**  
[www.ezykitchens.co.nz](http://www.ezykitchens.co.nz)



# Pisa



Width..... 23.1m

Length..... 25.6m

Floor area ..... 305m<sup>2</sup>



4



2



2



3



# Lowburn



Width.....17.2m  
 Length.....27.3m  
 Ground floor area ....278m<sup>2</sup>  
 First floor area.....69m<sup>2</sup>  
 Floor area.....347m<sup>2</sup>



5



3



3



2



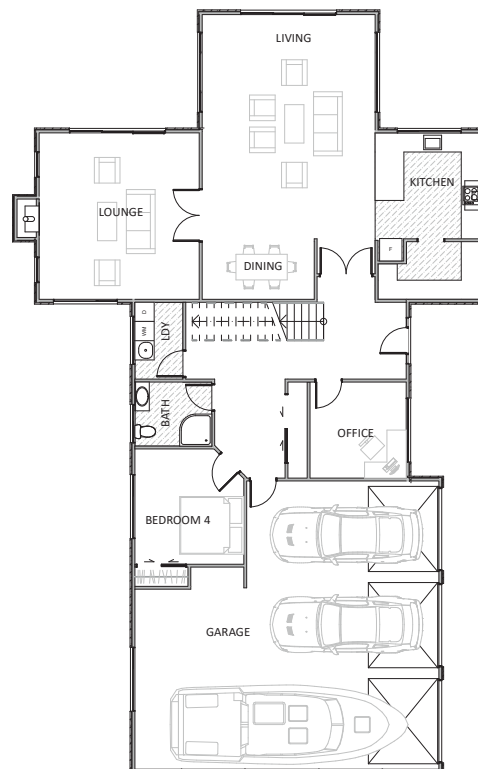
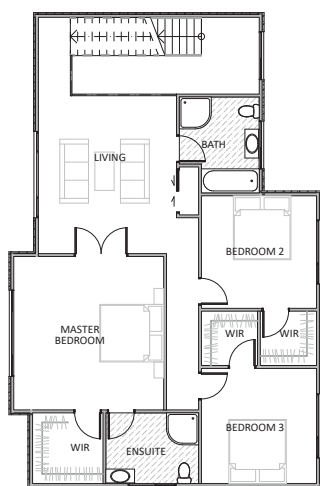
FEATURED

# Brookfield 1200 Wall Hung Vanity in Fumed Oak





# Redcliff



Width.....23.7m  
 Length.....14.7m  
 Ground floor area.....232m<sup>2</sup>  
 First floor area.....125m<sup>2</sup>  
 Floor area.....357m<sup>2</sup>



4



3



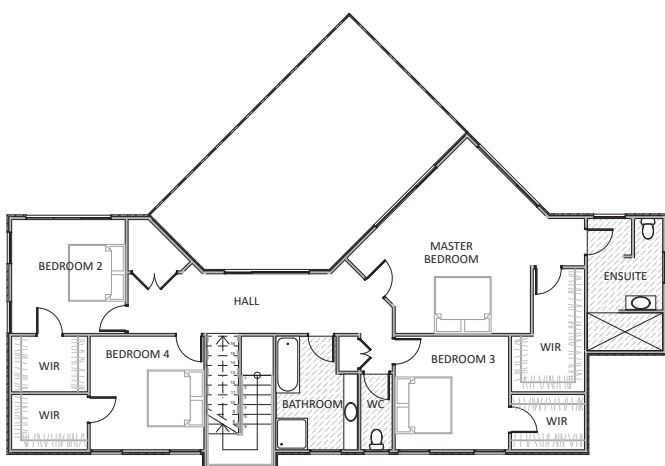
3



3



# Dublin Bay



Width.....25.3m  
 Length .....25.8m  
 Ground floor area ....285m<sup>2</sup>  
 First floor area.....146m<sup>2</sup>  
 Floor area.....431m<sup>2</sup>



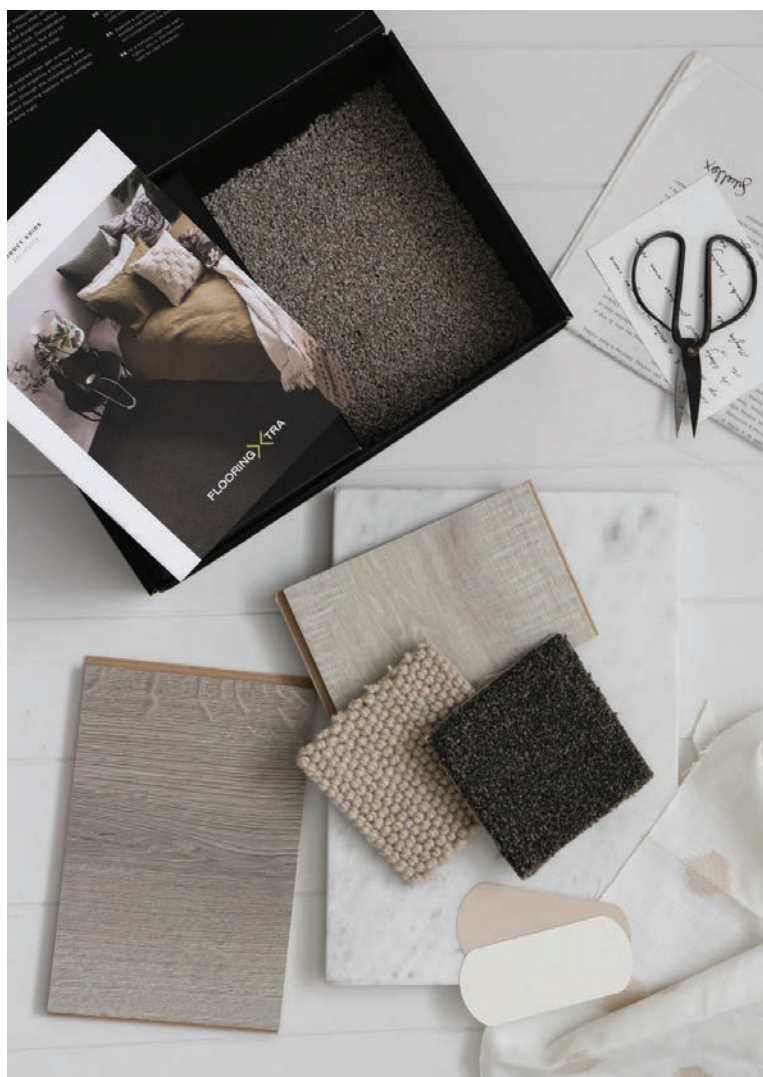


GORE  
FLOORING > < TRA



*Your vision, our expertise*





# We can help you create your dream home.

Building your dream home from scratch can be a daunting process, so let us help you bring your vision to life. From picking the right flooring that best suits your needs, to pairing it with complimenting curtain and blinds. Our interior specialists will offer expert advice and design options to reflect your style and budget.

**Visit us in store to meet our team, or book a free in-home consultation and quote.**

CARPET | VINYL | TIMBER | LAMINATE | TILES | CURTAINS | BLINDS



*Some of the beautiful  
homes we have built*





























