



# WELCOME...

...TO OUR SOUTHERN DESIGN BROCHURE

*Our mission is to provide good quality affordable homes for clients in the lower South Island.*

Southernwide Building has been operating under the directorship of John Taylor since 2008. We are locally owned and operated and are passionate about the Southern Region and providing excellent service.

We have a fantastic team who will manage your building process from concept to completion.

Southernwide Building can tailor any plan to suit your needs and lifestyle. Be it a new home design and build, a renovation or a shed you will receive the same quality service throughout.

Following is a sample range of plans that we can offer from residential builds, small farm worker's accommodation or holiday homes to larger lifestyle builds.

Our in-house design team can assist with any variations to these plans or send us the details of your property and we can send you back a selection of designs that will suit, check out our website for more plans and inspiration [www.southernwidebuilding.co.nz](http://www.southernwidebuilding.co.nz)

Call us today or visit our friendly team to start making your dreams become reality.



13 Main Street, PO Box 234  
Gore 9710, New Zealand  
03 203 9098 / 0800 0800 67

[www.southernwidebuilding.co.nz](http://www.southernwidebuilding.co.nz)





# Contents

<b>Borland</b>	<b>70m<sup>2</sup></b>	<i>2 Bed, 1 Bath, 1 Living</i>	4
<b>Oreti</b>	<b>98m<sup>2</sup></b>	<i>2 Bed, 1 Bath, 1 Living</i>	4
<b>Milford</b>	<b>113m<sup>2</sup></b>	<i>3 Bed, 1 Bath, 1 Living</i>	5
<b>Dacre</b>	<b>126m<sup>2</sup></b>	<i>3 Bed, 1 Bath, 1 Living</i>	5
<b>Clyde</b>	<b>126m<sup>2</sup></b>	<i>3 Bed, 1 Bath, 1 Living</i>	7
<b>McNab</b>	<b>133m<sup>2</sup></b>	<i>3 Bed, 2 Bath, 1 Living, 1 Car</i>	8
<b>Hokonui</b>	<b>164m<sup>2</sup></b>	<i>3 Bed, 1 Bath, 1 Living, 2 Car</i>	9
<b>Oyster Bay</b>	<b>164m<sup>2</sup></b>	<i>3 Bed, 2 Bath, 1 Living</i>	11
<b>Arrowtown</b>	<b>172m<sup>2</sup></b>	<i>3 Bed, 2 Bath, 1 Living, 2 Car</i>	12
<b>Wakatipu</b>	<b>184m<sup>2</sup></b>	<i>3 Bed, 2 Bath, 1 Living, 2 Car</i>	13
<b>Dunstan</b>	<b>184m<sup>2</sup></b>	<i>3 Bed, 2 Bath, 1 Living, 2 Car</i>	14
<b>Manapouri</b>	<b>190m<sup>2</sup></b>	<i>3 Bed, 2 Bath, 1 Living, 2 Car</i>	15
<b>Hawea</b>	<b>204m<sup>2</sup></b>	<i>4 Bed, 2 Bath, 1 Living, 2 Car</i>	17
<b>Gibbston</b>	<b>206m<sup>2</sup></b>	<i>5 Bed, 2 Bath, 1 Living, 2 Car</i>	19
<b>Kingston</b>	<b>215m<sup>2</sup></b>	<i>4 Bed, 2 Bath, 2 Living, 2 Car</i>	20
<b>Dunstan Var</b>	<b>218m<sup>2</sup></b>	<i>3 Bed, 2 Bath, 1 Living, 2 Car, Loft</i>	21
<b>Waimea</b>	<b>221m<sup>2</sup></b>	<i>3 Bed, 2 Bath, 2 Living, 2 Car</i>	23
<b>Clifden</b>	<b>233m<sup>2</sup></b>	<i>4 Bed, 2 Bath, 2 Living, 2 Car</i>	24
<b>Fortrose</b>	<b>247m<sup>2</sup></b>	<i>4 Bed, 2 Bath, 2 Living, 2 Car</i>	25
<b>Clydevale</b>	<b>252m<sup>2</sup></b>	<i>4 Bed, 2 Bath, 2 Living, 2 Car</i>	27
<b>Bannockburn</b>	<b>262m<sup>2</sup></b>	<i>4 Bed, 2 Bath, 2 Living, 2 Car</i>	29
<b>Tarras</b>	<b>273m<sup>2</sup></b>	<i>4 Bed, 2 Bath, 2 Living, 2 Car</i>	30
<b>Chatto Creek</b>	<b>281m<sup>2</sup></b>	<i>4 Bed, 3 Bath, 3 Living, 2 Car</i>	31
<b>Pisa</b>	<b>305m<sup>2</sup></b>	<i>4 Bed, 2 Bath, 2 Living, 2 Car</i>	34
<b>Lowburn</b>	<b>347m<sup>2</sup></b>	<i>5 Bed, 3 Bath, 3 Living, 2 Car</i>	35
<b>Redcliff</b>	<b>357m<sup>2</sup></b>	<i>4 Bed, 3 Bath, 3 Living, 3 Car</i>	36
<b>Dublin Bay</b>	<b>431m<sup>2</sup></b>	<i>5 Bed, 3 Bath, 2 Living, 2 Car</i>	37



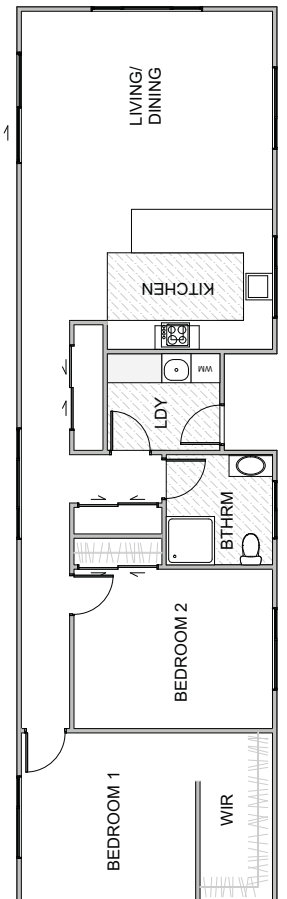
# BORLAND



Width..... 7.9m  
 Length..... 8.8m  
 Floor Area..... 70m<sup>2</sup>



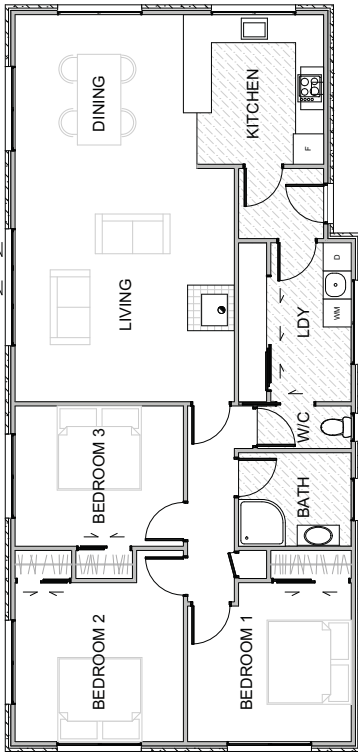
# ORETI



Width..... 5.38m  
 Length..... 18.6m  
 Floor Area..... 98m<sup>2</sup>



# MILFORD



Width..... 6.6m  
 Length..... 15.7m  
 Floor Area..... 113m<sup>2</sup>



# DACRE



Width..... 8.1m  
 Length..... 15.6m  
 Floor Area..... 126m<sup>2</sup>

# ENGINEERED FLOORING SYSTEM.

**READY**Superslab  
**ENGINEERED STRENGTH**



READY Super Slab is an engineered flooring system, known as a raft foundation, that can be used on all ground conditions regardless of your land classification.

READY Super Slab is CodeMark-certified, meaning building consent authorities will accept it as complying with the New Zealand Building Code\*. You will still need to apply for consent, however the CodeMark means no delays at council.

**Talk to us about speed of construction, thermal and sustainability gains by adding QPODs and QuickSet Formwork to your READY Super Slab.**

**Allied**  
**Concrete**  
make hard easy

To download the technical manual,  
or view the CodeMark certificate go to  
**[www.alliedconcrete.co.nz](http://www.alliedconcrete.co.nz)**



\*Must be used as specified in the CodeMark certificate and READY Super Slab technical manual.

# CLYDE

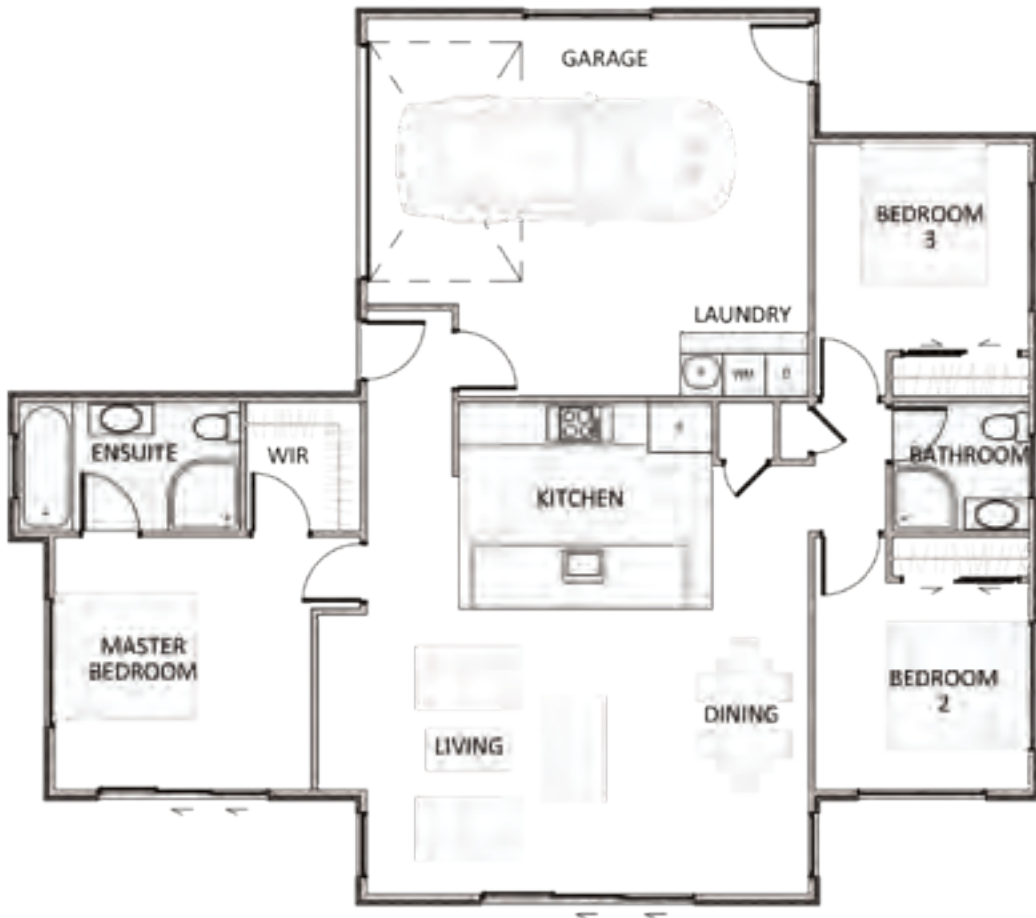


Width.....9.71m  
Length.....16.94m  
Floor Area.....126m<sup>2</sup>





# McNAB



Width.....12.5m  
Length.....14.4m  
Floor Area.....133m<sup>2</sup>



# HOKONUI



Width..... 8.9m  
Length..... 22.4m  
Floor Area..... 164m<sup>2</sup>





# DECORATIVE CONCRETE

Enhance your home with Allied Concrete's exclusive range of high quality decorative concrete textures and options.



## READYColour

Bring concrete to life with our range of 16 exclusive contemporary colours that will compliment your surrounding environment



## READYExposed

Combine the strength, durability and affordability of concrete with New Zealand's spectacular river beds.



## READYGlow

Create a unique design element to your space with the world's most powerful glow stones. Perfect for the pool surround, patio, path or driveway as a passive lighting source.



## READYPolished

Create a high quality contemporary look to your home with our range of polished finishing options. Combine READY Colour, Exposed or Glow to create a truly unique design.

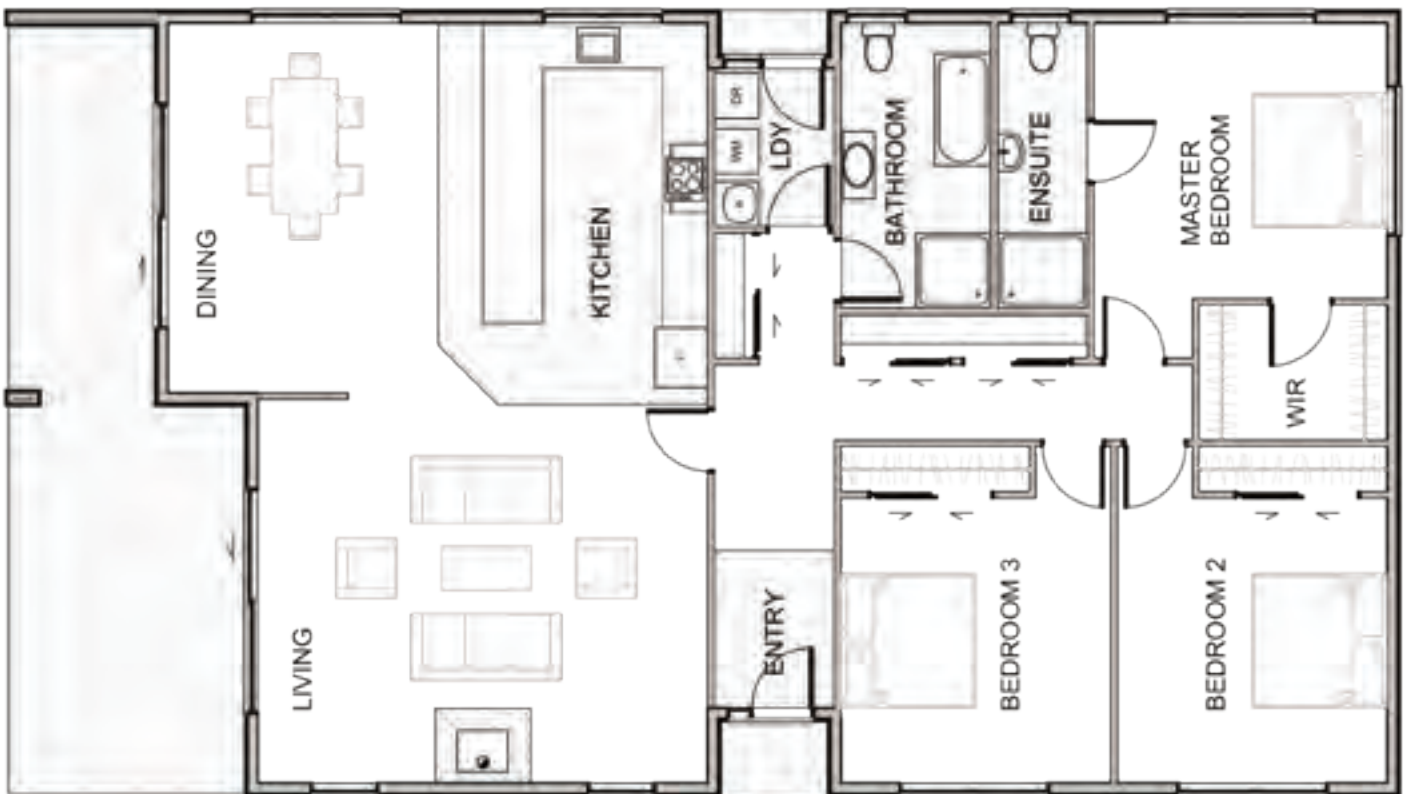


0800 4 ALLIED  
[www.alliedconcrete.co.nz](http://www.alliedconcrete.co.nz)

**Allied Concrete**  
make hard easy



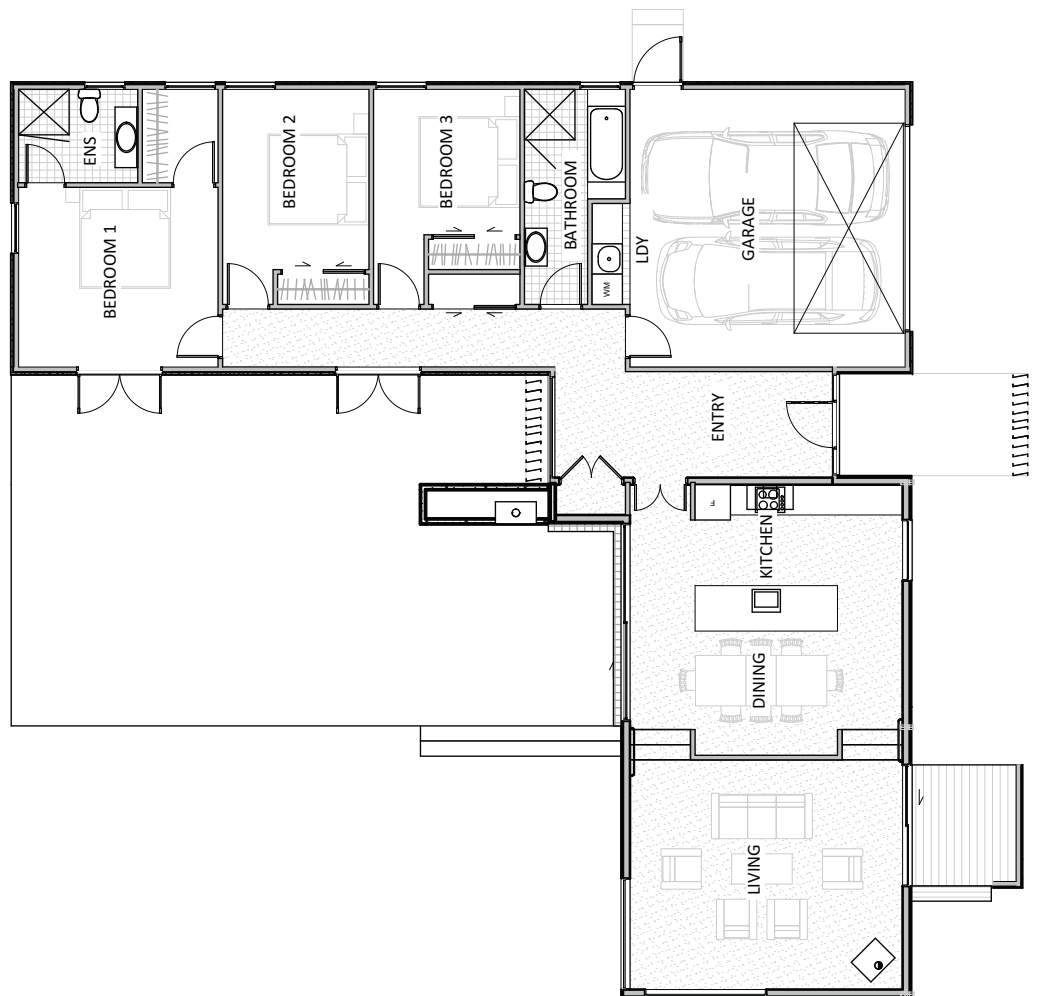
# OYSTER BAY



Width.....10.4m  
 Length.....18.6m  
 Floor Area.....164m<sup>2</sup>



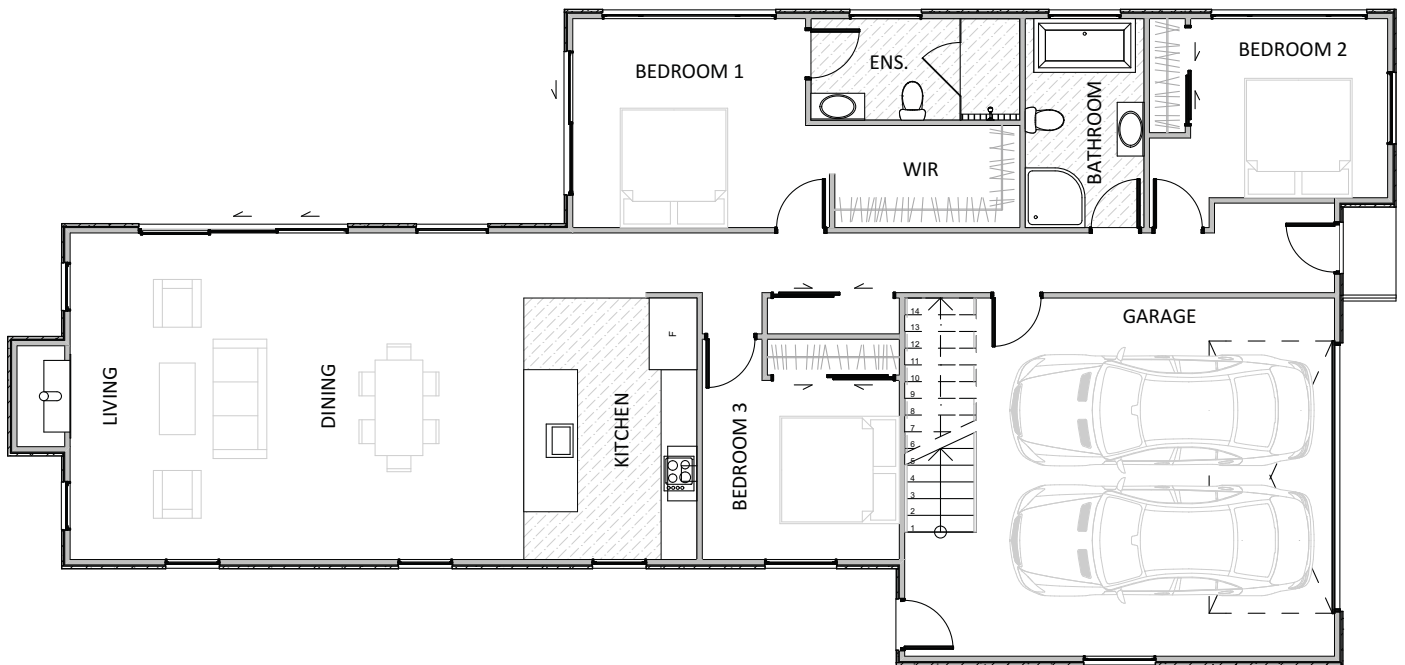
# ARROWTOWN



-  3
-  2
-  1
-  2

Width.....17.74m  
 Length.....18m  
 Floor Area.....172m<sup>2</sup>

# WAKATIPU



Width.....10.8m  
 Length..... 23.1m  
 Floor Area .....184m<sup>2</sup>



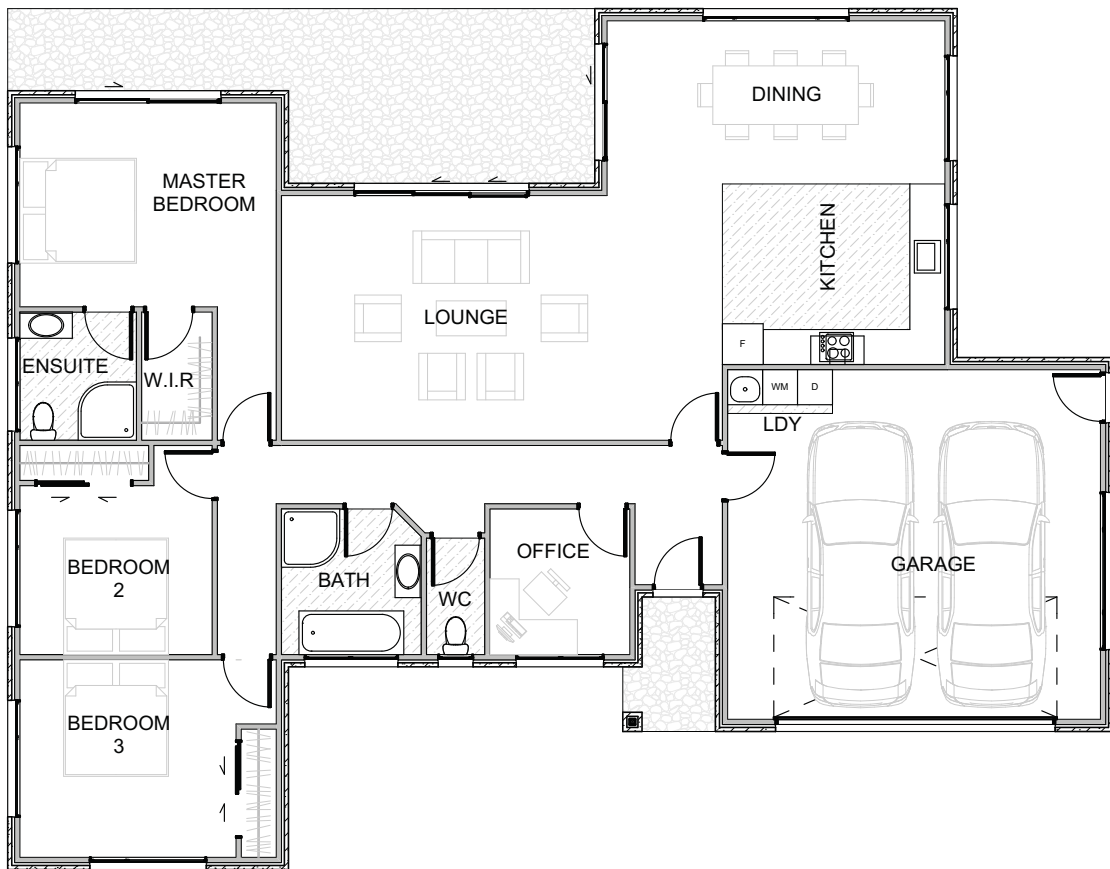
# DUNSTAN



 **3**
 **2**
 **1**
 **2**

Width.....15.1m  
 Length.....19.6m  
 Floor Area .....184m<sup>2</sup>

# MANAPOURI



Width.....14.5m  
 Length.....18.7m  
 Floor Area.....190m<sup>2</sup>

**TESTED & MADE  
IN NEW ZEALAND  
FOR NEW ZEALAND  
CONDITIONS**



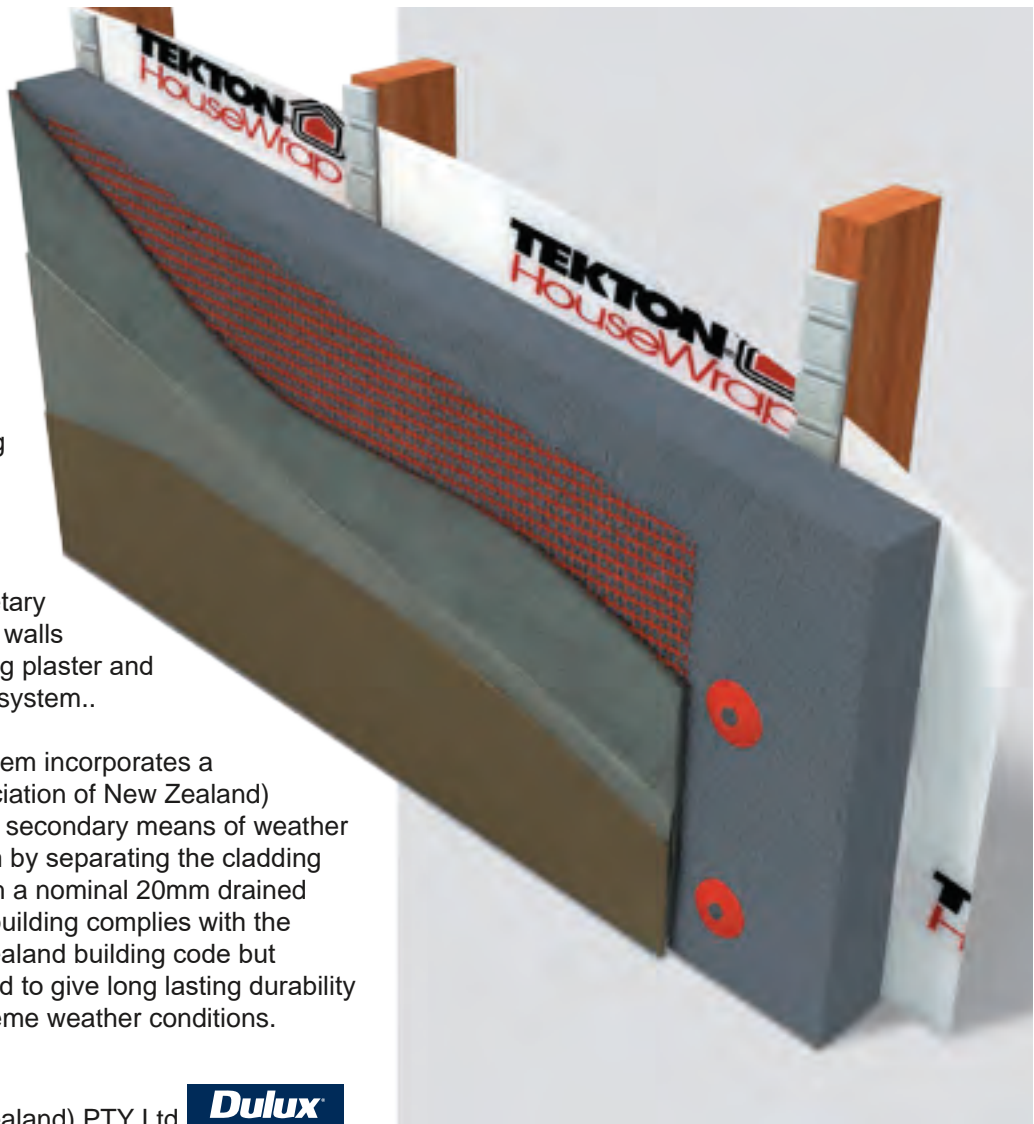
# CaviteClad EPS

EXTERIOR INSULATION AND FINISHING SYSTEM

**CaviteClad is a cavity-based Exterior Insulated Cladding and Finishing System (EIFS) which is used as a versatile, cost effective exterior wall cladding system for residential and light commercial construction.**

The CaviteClad wall cladding system is made up of 50mm expanded polystyrene sheets that are fixed to timber or steel framing over the surface of a self draining 20mm cavity. The polystyrene sheets are then overcoated and fibreglass mesh reinforced with a range of specially blended proprietary cement based plasters before the walls are finished with a chosen finishing plaster and painted with a 100% acrylic paint system..

The CaviteClad wall cladding system incorporates a BRANZ (Building Research Association of New Zealand) tested and appraised primary and secondary means of weather defence against water penetration by separating the cladding from the external wall framing with a nominal 20mm drained cavity. This not only ensures the building complies with the latest requirements of the New Zealand building code but ensures it has been formally tested to give long lasting durability even in New Zealand's most extreme weather conditions.



A division of DuluxGroup (New Zealand) PTY Ltd

**Dulux**

**Specialized**  
CONSTRUCTION PRODUCTS

For more information please visit our website or call.

web [www.specialized.co.nz](http://www.specialized.co.nz) 0800 0800 79  
Exterior Plastering Specialists



# HAWEA



Width.....19.7m  
 Length.....16.5m  
 Floor Area .....204m<sup>2</sup>



Dulux Ceiling White + PLUS  
Kitchen&Bathroom



Dulux Wash&Wear + PLUS  
Kitchen&Bathroom



## THE PERFECT PAIR TO PROTECT YOUR KITCHEN AND BATHROOM

Protect your walls in damp and humid areas with exceptional washability and long lasting finish. Made with Barrier Technology® and fortified with mould inhibitor, **Dulux Wash&Wear + PLUS Kitchen&Bathroom** will keep your walls looking freshly painted for years.

For a bright white ceiling in damp areas such as kitchens and bathrooms, **Dulux Ceiling White + PLUS Kitchen&Bathroom** provides superior hiding power and only one coat over light colours to easily achieve a look that will last.

The best part?  
They're both specially formulated to provide protection for damp and humid areas like the kitchen and bathroom, and guaranteed against mould growth for 10 years\*.

LEARN MORE AT  
[dulux.co.nz](http://dulux.co.nz)



**Dulux**  
Worth doing, worth Dulux.

Dulux, Worth Doing Worth Dulux, Wash & Wear and the Sheepdog device are registered trade marks of DuluxGroup (Australia) Pty Ltd.

\*Refer to product label for full conditions. This guarantee does not limit and may not necessarily exceed your rights under the Consumer Guarantees Act 1993.



# GIBBSTON



Width.....11.45m  
 Length.....22.8m  
 Floor Area .....206m<sup>2</sup>

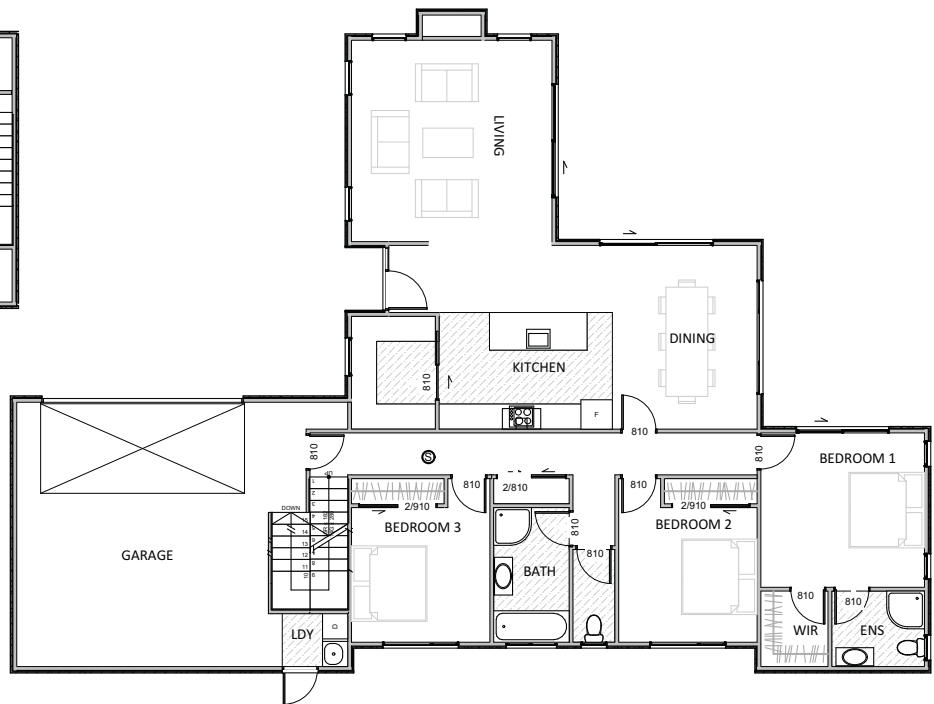
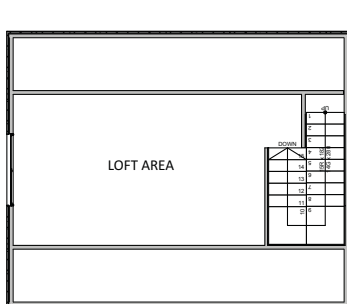
# KINGSTON



Width.....13.2m  
 Length.....21.5m  
 Floor Area.....215m<sup>2</sup>



# DUNSTAN VARIATION WITH LOFT



Width.....15.71m  
 Length..... 21.82m  
 First Floor.....194m<sup>2</sup>  
 Second Floor..... 24m<sup>2</sup>  
 Floor Area.....218m<sup>2</sup>

 3
  2
  1
  2
  LOFT 1



**AITKEN JOINERY**  
LTD

Suppliers of Vantage  
Aluminium & Klima UPVC  
Windows and Doors

### Contact Us

[sales@aitkenjoinery.co.nz](mailto:sales@aitkenjoinery.co.nz)

Gore

18 Gorton St, 9710

P (03) 208 6750

Cromwell

54 McNulty Road, 9310

P (03) 455 4000

Dunedin

19b Portsmouth Drive

P (03) 244 8271

[www.aitkenjoinery.co.nz](http://www.aitkenjoinery.co.nz)



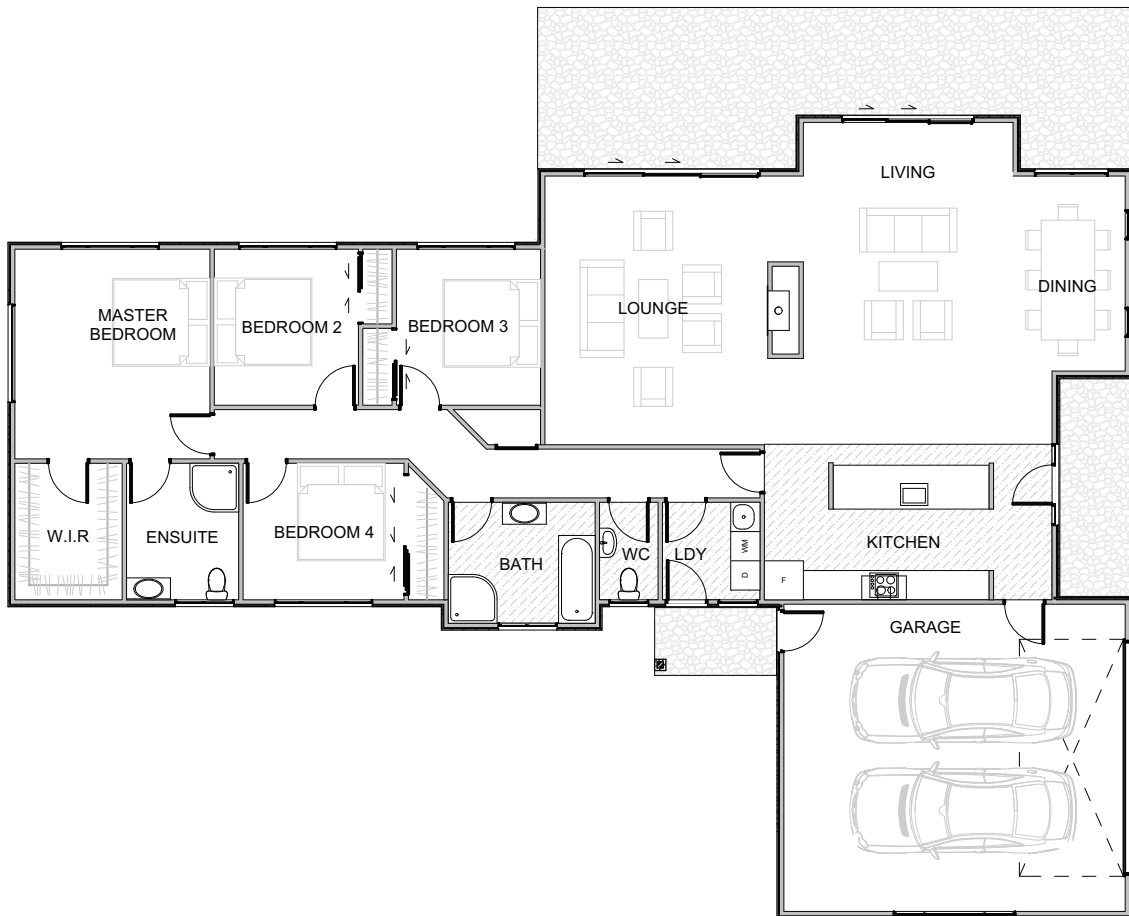


# WAIMEA



Width.....16m  
 Length.....20.5m  
 Floor Area.....221m<sup>2</sup>

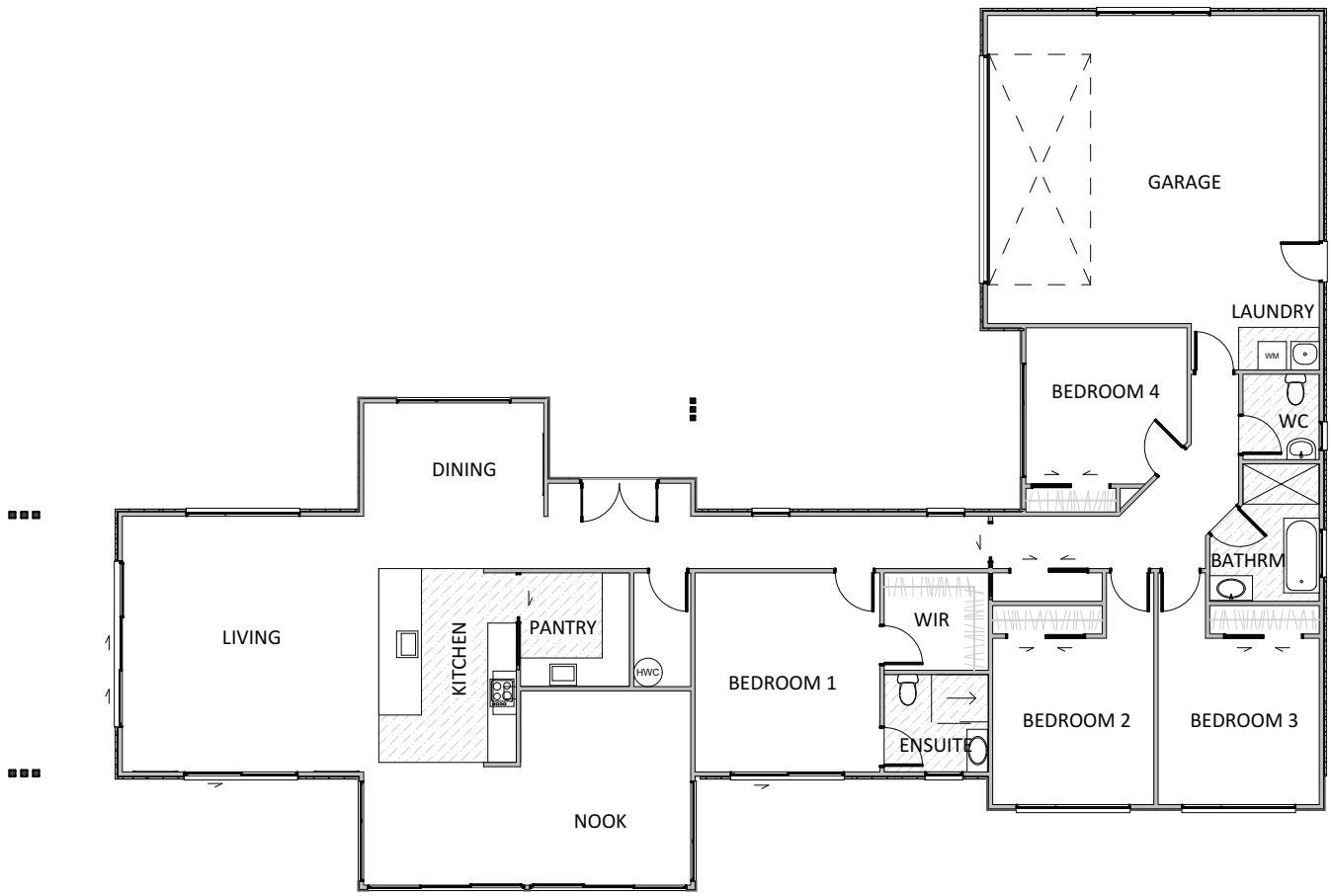
# CLIFDEN



Width.....16.2m  
 Length.....22.9m  
 Floor Area.....233m<sup>2</sup>



# FORTROSE



Width.....18.53m  
 Length.....25.43m  
 Floor Area.....247m<sup>2</sup>



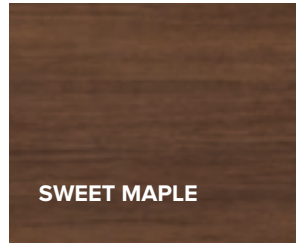
*Pictured: Brookfield 900 Wall Hung Vanity in Gloss White, Broadway 900 LED Mirror*



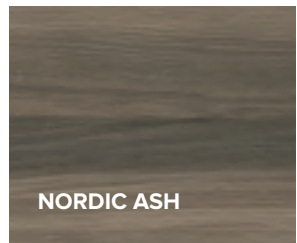
CHARRED ELM



ROASTED WALNUT



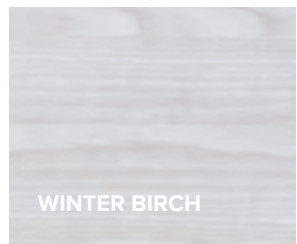
SWEET MAPLE



NORDIC ASH



CALIFORNIAN OAK



WINTER BIRCH



GLOSS WHITE

CREATE YOUR

# Dream Bathroom

The team at Newtech have you covered with your new bathroom design. With a full range of bathroomware products and design ideas to fit within your space and budget. All our products can be viewed in detail at [newtech.co.nz](http://newtech.co.nz). Our team are only a phone call away on **0800 728 662** to discuss and plan your design options today.



Vanities



Baths



Mirrors



Tower Stations



Toilets



Heated Towel Rails



Accessories



# CLYDEVALE



Width.....13m  
 Length.....24.7m  
 Floor Area.....252m<sup>2</sup>

# Connor & Fitzpatrick

ELECTRICAL CONTRACTORS & RETAILERS



## Commercial & Domestic Electrical Installations



- New builds and renovations
- Electrical design plans
- Advice re future proofing
- Free quotations

## Appliances



- Quality brands
- Knowledgeable & friendly sales staff
- Delivery & installation
- Repairs & maintenance

## Heat Pumps



- Quality brands
- Qualified installers
- Expert advice
- Free quotes

## Lighting



- The correct lighting can make all the difference
- Let us assist in designing a plan for your property

Medway Street  
Gore  
Ph 03) 2086741

SHOP  
LOCAL





# BANNOCKBURN



Width.....23.8m  
 Length.....16.6m  
 Floor Area.....262m<sup>2</sup>

# TARRAS



Width.....16.5m  
 Length.....22.6m  
 Floor Area.....273m<sup>2</sup>



# CHATTO CREEK



-  4
-  3
-  3
-  2

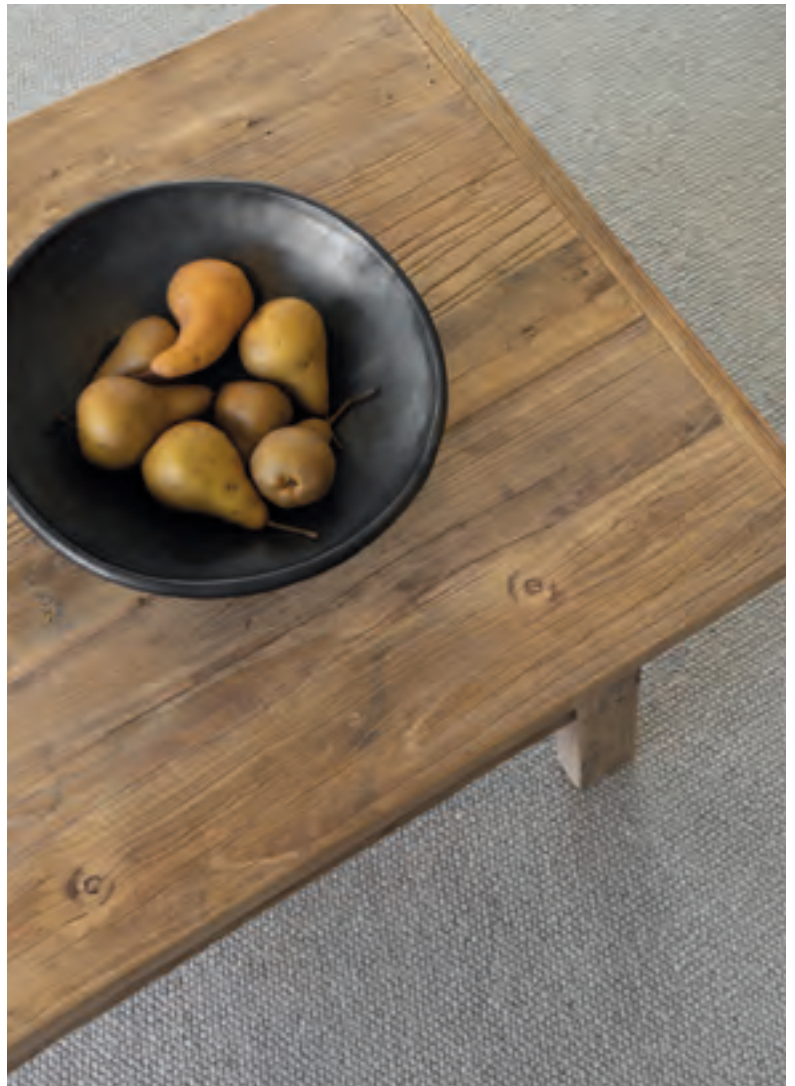
Width.....19.7m  
 Length.....16.5m  
 Ground Floor.....233m<sup>2</sup>  
 First Floor.....48m<sup>2</sup>  
 Floor Area.....281m<sup>2</sup>



**GORE**  
**FLOORING XTRA**

CARPET • VINYL • TIMBER • LAMINATE • RUGS • WALLPAPER  
CURTAINS • BLINDS • SOFT FURNISHINGS





## We can help you create your dream home.


Building your dream house from scratch can be a daunting process, so let us help you bring your vision to life. From picking the right flooring that best suits your needs, to pairing it with complimenting wallpaper, curtains, blinds and rugs. Our interior specialists will offer expert advice and design options to reflect your style and budget.

**Visit us in store to meet our team, or book a free in-home consultation and quote.**

### **GORE FLOORING XTRA COLOURPLUS**

22 Hokonui Drive, Gore

**P:** (03) 208 9535 **E:** [gore@flooringxtra.co.nz](mailto:gore@flooringxtra.co.nz)

Muse 

# PISA



Width..... 23.1m  
Length..... 25.6m  
Floor Area ..... 305m<sup>2</sup>



# LOWBURN



Width.....17.2m  
 Length.....27.3m  
 Ground Floor.....278.1m<sup>2</sup>  
 First Floor.....68.9m<sup>2</sup>  
 Floor Area.....347m<sup>2</sup>



# REDCLIFF



Width.....23.7m  
 Length.....14.7m  
 Ground Floor.....232m<sup>2</sup>  
 First Floor.....125m<sup>2</sup>  
 Floor Area.....357m<sup>2</sup>





# DUBLIN BAY



Width.....25.3m  
 Length.....25.8m  
 Ground Floor.....285m<sup>2</sup>  
 First Floor.....146m<sup>2</sup>  
 Floor Area.....431m<sup>2</sup>



# DOMINATOR GARAGE DOORS

GARAGE DOOR & OPENING SYSTEMS  
[www.dominator.co.nz](http://www.dominator.co.nz)

**DOMINATOR**<sup>®</sup>



## HOME SAFE HOME, WITH STYLE.

Safe and secure design is our priority and we are focused on helping protect the things you hold precious. Our commitment to quality flows through everything we do, including providing a friendly and skilled measure, quote and installation service. We are the complete garage door professionals. For more information on our latest Garage Doors and Openers, please contact Dominator Southland.

---

FOR A FREE MEASURE AND QUOTE CALL 03-218 6028

[www.dominator.co.nz](http://www.dominator.co.nz)



*Some of the beautiful homes we have built*





















# WHAT OUR CLIENTS HAVE TO SAY

*"SouthernWide Building has successfully built our house in Queenstown without us viewing the property once. The process has been seamless right from the very beginning when we were designing the house. Throughout the whole process communication has been very clear and the project managers have been extremely nice to work with. Some people viewed it as a risk building completely remotely; however SouthernWide has gone over and above to deliver a premium house for us.*

*If you are looking to build a house seamlessly with friendly project managers who don't mind a laugh but will get the job done right, then we couldn't recommend SouthernWide highly enough."*

**- Jack W. & Jacob S.**

*"We are so pleased that SouthernWide Building built our new home. After contacting SouthernWide about a new build, John promptly came up with different options to suit our budget and section size. Nothing was a problem and John cleverly designed the perfect house for us. The entire team at SouthernWide were extremely helpful especially since our build was right in the middle of 2020. Our house was completed on time and on budget (even with 5 weeks of lockdown and further restrictions throughout the year). They were incredibly knowledgeable about the process of building and understood the timeline requirements for new builds under the First Home Grant. We felt involved with every stage of the build, and it was completed to a high standard. We highly recommend SouthernWide Building to anyone who is looking to build a new home. "*

**- Sentain R. & Aaron M.**

*"We recently moved into our new home built by SouthernWide Building in Gore. The SouthernWide Building team did a great job, we are very happy with the quality of the build. COVID threw us some curve balls and hurdles to overcome along the way. Thank you for building our home that we are proud of and I will enjoy living in for many years to come."*

**- Sharon S.**

*"Right from when we made the decision to do a new build, we sat with John (SouthernWide) and discussed ideas. Due to having a larger section we were able to have more scope on what we could build, my one requirement was that I wanted points of difference and I got it!! From the initial outline of the home John designed (which was never deviated from), John guided us with great suggestions on what would work within the build, he listened to what we wanted incorporated. We love our home and enjoy living in it!*

*We want to thank John, Sandy, Paige, Ritchie and Ryan and the rest of the team at SouthernWide Building for all the hard work that you did to ensure we got a lovely enjoyable home."*

**- Philippa W. & Selwyn W.**





# Notes for your new home:

A series of horizontal dotted lines spanning the width of the page, providing a space for handwritten notes.



# *Love this place*

New homes – Renovations – Sheds

13 Main Street, PO Box 234, Gore 9710, New Zealand  
03 203 9098 / 0800 0800 67

[www.southernwidebuilding.co.nz](http://www.southernwidebuilding.co.nz)

